

TRANSFORMER MOUNTS

DESCRIPTION

The AMC MECANOCAUCHO® TRANSFORMER MOUNT combines a spring and a TRANSFORMER MOUNT damper in a single compact unit. This mount is particularly useful for transformer where isolation is needed.

The internal architecture of the mount is composed of a system that bonds the rubber to both metal parts.

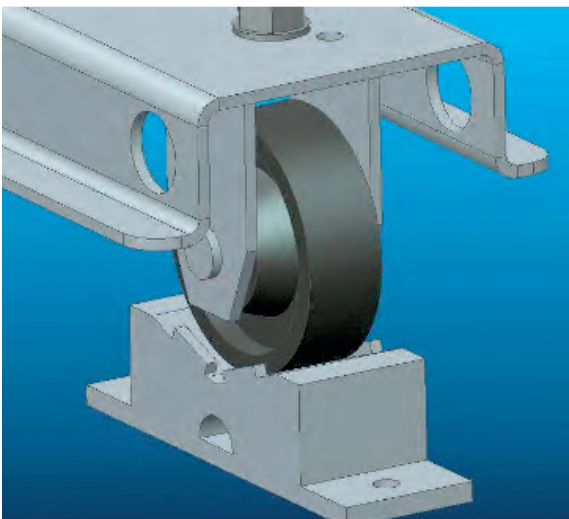
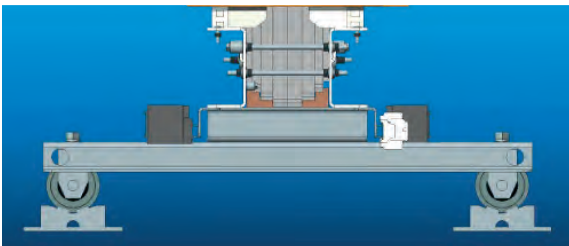
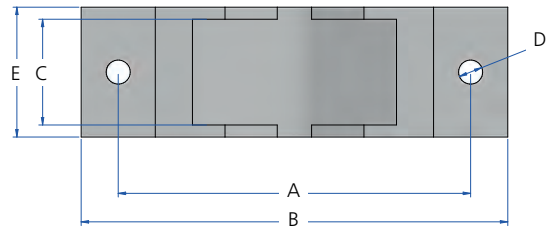
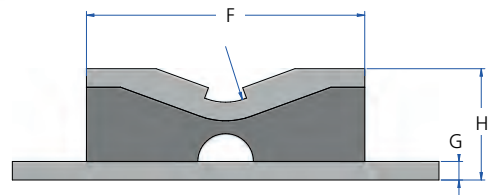
TECHNICAL CHARACTERISTICS

- The AMC MECANOCAUCHO® TRANSFORMER MOUNT incorporates resilient natural rubber specifically designed to last over time.
- The metal parts have a suitable anticorrosive treatment for outdoor applications.
- The load capacity shown in our catalogue is the maximum static values the transformer mount can support, with the capability of withstanding occasional extreme dynamic overload.

APPLICATIONS

The AMC MECANOCAUCHO® mounts have been primarily designed as transformer mounts.

The shape of the upper metal plate allows for the accommodation of the transformer wheel. This characteristic permits an easy installation without any additional fastening system.



Type	A (mm)	B (mm)	C (mm)	D (mm)	E (mm)	F (mm)	G (mm)	H (mm)	Code	Weight (gr.)	Max. Load (kg)
Small	190	230	57	13	70	150	10	60	148301	2600	800
Large	290	330	88	13	100	250	10	70	148311	5800	3000

LOAD DEFLECTION GRAPH
AMC MECANOCAUCHO® TYPE TRANSFORMER MOUNT

