



DESCRIPTION

The AMC MECANOCAUCHO® TF type anti vibration mounts are made of two moulded parts. One of circular fully moulded rubber, and one circular part which is fully bonded to a centre tube which acts as a guide for the machine anchoring bolt. They are installed pre-compressed on the actual machine frame, whose thickness "E" determines the degree of pre-compression of the assembly.

TECHNICAL CHARACTERISTICS

This antivibration mount is ideal for applications with major dynamic loadings such as; Off-Road Construction vehicles for engines, gear-boxes, Operator Cabins where movement control is necessary. It also offers optimal stability, as well as good attenuation of impacts and high frequency vibrations.

ASSEMBLY INSTRUCTIONS

The TF mounts should be assembled according to the following installation instructions. There are two possible configurations, see assembly 1 and assembly 2, for which the recommendations given in the following chart must be observed. They can be installed in plates of different thicknesses according to the Tmx and Tmin values given in the Table provided. The Load vs Deformation curves will vary according to the plate thickness in which the mount will be installed.

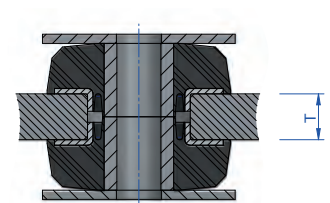
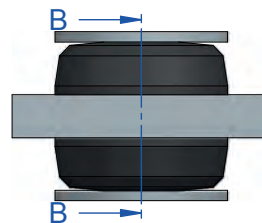
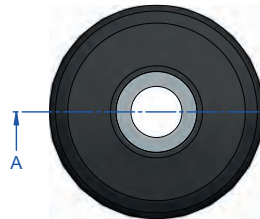
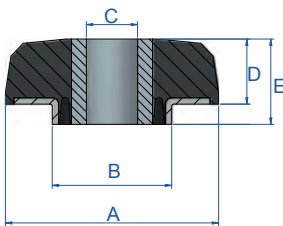
APPLICATIONS

- Vehicle cabins
- Construction equipment machinery and agricultural vehicles, etc.

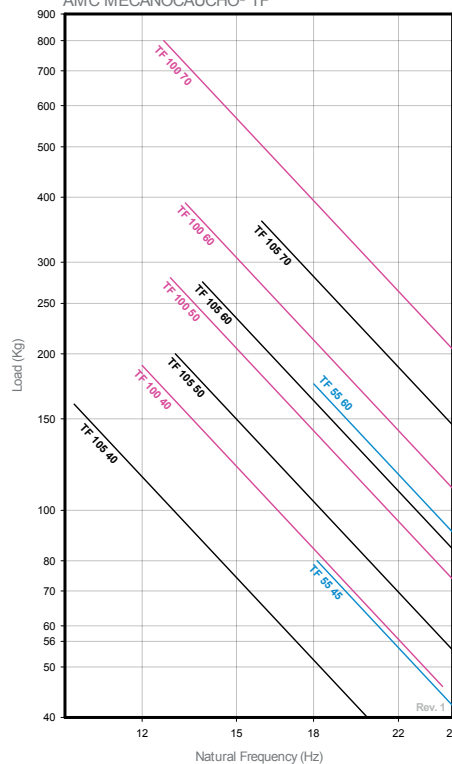
Type	A (mm.)	B (mm.)	C (mm.)	D (mm.)	E (mm.)	T (mm.)	Code	Shore	Max. Load (kg)
TF 55	55	40,5	16,2	16,4	-	10	138061	45 Sh	80
							138063	60 Sh	175
							137365	40 Sh	190
TF 100	100	56	24	30,5	40	25	137366	50 Sh	280
							137363	60 Sh	390
							137364	70 Sh	800
							137381	40 Sh	160
TF 105	105	75	16	29	38	20	137382	50 Sh	200
							137383	60 Sh	275
							137384	70 Sh	360

Washers should be used, if the rubber surface is not covered with the contact surface. Washers upon request.

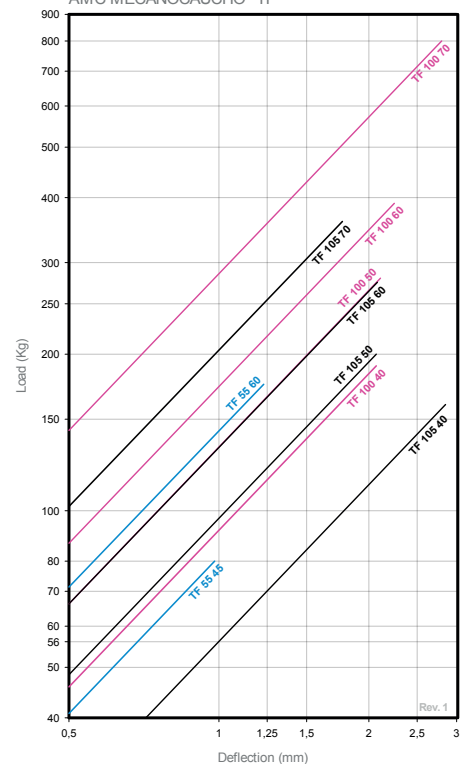
Type	Code	Øext (mm.)	Øint (mm.)	Thickness (mm)
TF 55 Washer	611056	54	17	3
TF 100 Washer	606484	110	24,5	5
TF 105 Washer	606481	105	18	5



NATURAL FREQUENCY GRAPHS
AMC MECANOCAUCHO® TF

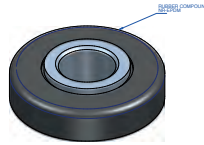
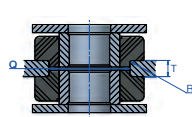
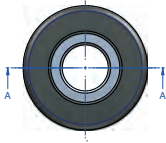
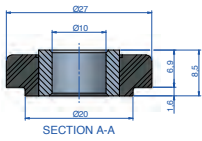


LOAD DEFLECTION GRAPHS
AMC MECANOCAUCHO® TF



MECANOCAUCHO® TFS

The AMC-Mecanocaucho® TFS type anti vibration mounts are made of two symmetric moulded parts. They are designed to work in traction or compression providing a similar stiffness. When installed with metal washers they allow failsafe installations.



Type	Color Code	Shore	Q (mm)	T (mm)	Max. Load (kg)	R (mm)	Code
TFS 25	Yellow	45 Sh	20	4	10	1	138035

WASHERS

Washers are supplied on request.

Type	Weight (gr)	Øext (mm)	Øint (mm)	Thickness (mm)	Code
TFS 25	10	28,2	10,5	2	606185