

# SPS

## DESCRIPTION

AMC MECANOCAUCHO® SPS type mounts are comprised of two pressed metal parts. A cup shaped Top Cap and a pressed steel inverted cup shaped base, two moulded rubber sections are assembled to the metal parts and secured by means of a swaged centre insert which is threaded.

## TECHNICAL CHARACTERISTICS

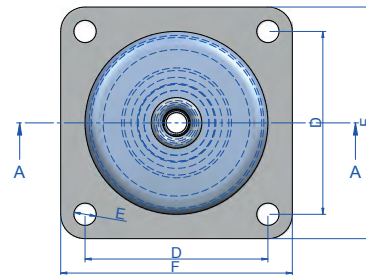
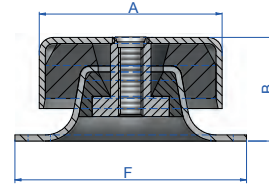
Due to the design, SPS mounts can work with compression and tensile loads, isolating effectively using the friction of the rubber section with the surfaces of the assembled metal parts. It is most effective in applications where high frequency vibrations are predominant.

Various rubber compounds are available for insertion depending upon the applications to be considered, high temperatures, oil and diesel resistance, and ageing resistance against Ozone attack.

## APPLICATIONS

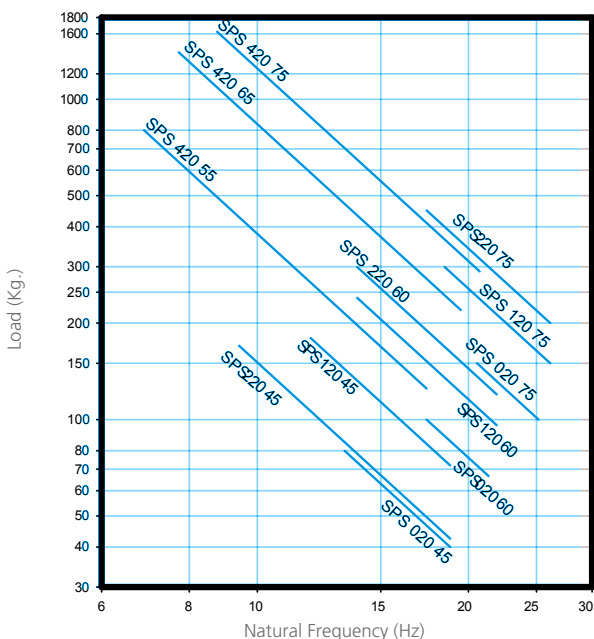
With a captive rubber unit the SPS mounts afford total safety in Mobile applications. They are compact in design for the range of loads to be supported and can be manufactured in Stainless Steel metal parts as an option for Food Industry applications, and coupled with appropriate compounds for the environments involved.

Applications range from high speed operation equipment such as Refrigeration units, Compressors, Transformers, HVAC units on trains or coaches.



Type	A (mm)	B (mm)	C (mm)	D (mm)	E (mm)	F (mm)	G (mm)	Weight (gr.)	Code	Load (kg)	Shore
SPS 020	50	28	M-8	50	6	60	1,5	171	140001	80	45 Sh
									140003	100	60 Sh
									140005	150	75 Sh
SPS 120	76	39	M-10	63,5	6,7	76	3	524	140002	180	45 Sh
									140004	240	60 Sh
									140006	300	75 Sh
SPS 220	90	51	M-12	90	11	114	3	971	140007	170	45 Sh
									140008	300	60 Sh
									140009	450	75 Sh
SPS 420	125	78	M-16	114	13	144	4	2424	140034	800	55 Sh
									140035	1400	65 Sh
									140033	1625	75 Sh

AMC NATURAL FREQUENCY  
MECANOCAUCHO® SPS TYPE



AMC LOAD DEFLECTION GRAPH  
MECANOCAUCHO® SPS TYPE

