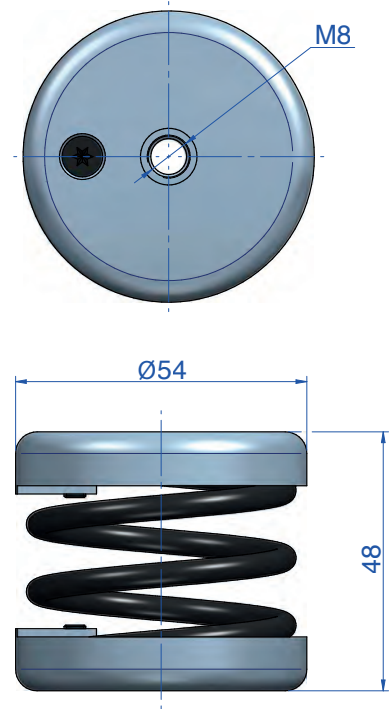


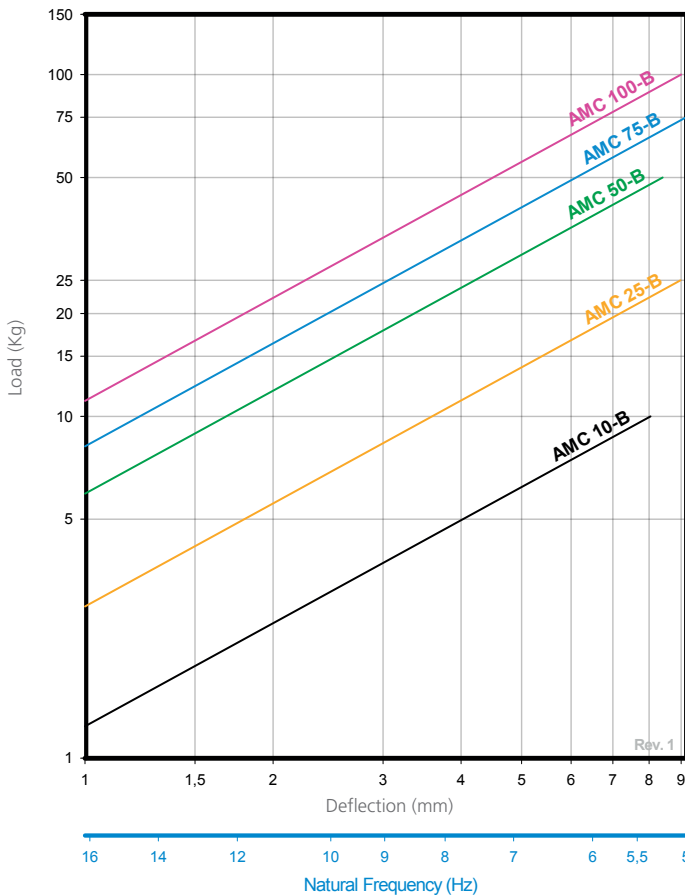
B Series

The B Series spring mounts are necessary in all machinery, which, by virtue of its design, has reciprocating or rotating parts, creates vibration to some degree through the imbalance of the moving parts.

This vibration produced by a machine leads to different problems, such as a reduction in the machine's useful life through part wear, plus the transmission of this vibration to other non-insulated adjacent structures, giving rise to problems of noise and vibration transmission. It is therefore important to install a spring mount to machinery.



LOAD VS DEFLECTION DIAGRAM
AMC-MECANOCAUCHO® B SERIES



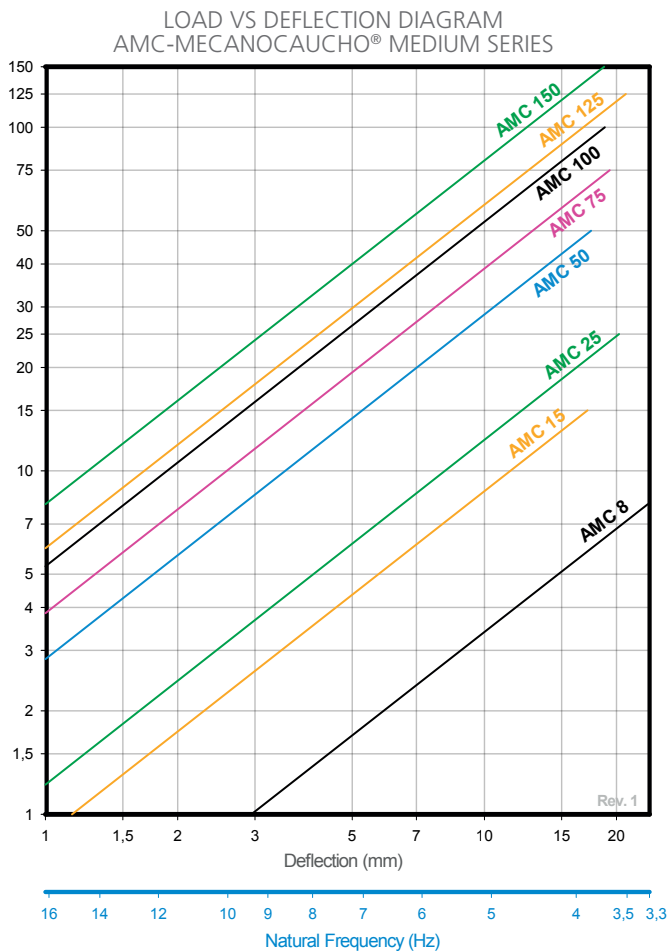
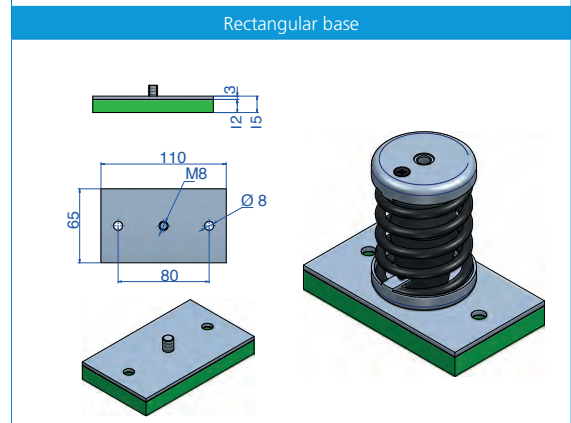
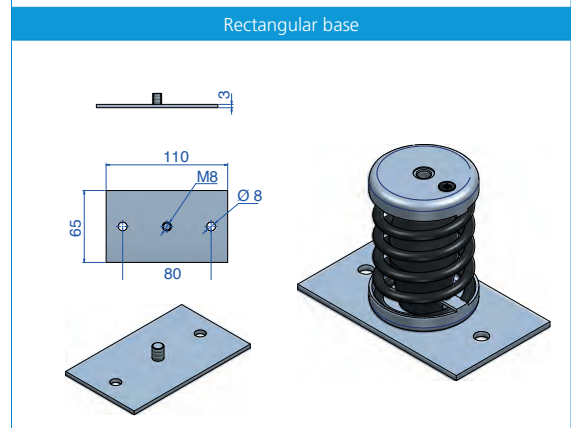
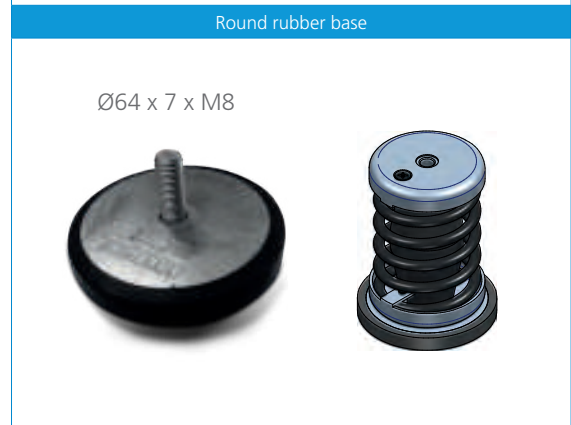
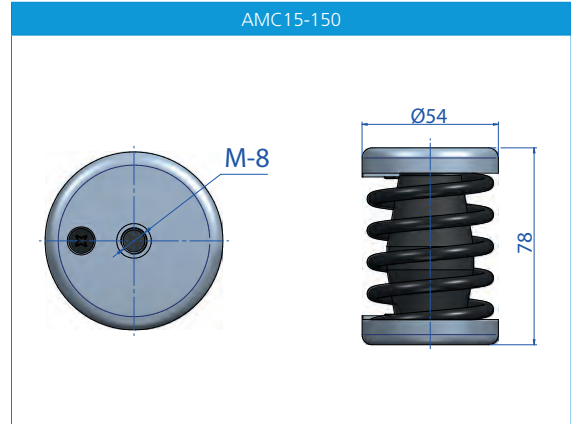
Type	Spring color	M	Max. Load (kg)	Code	Weight (kg)	K (N/mm)
AMC 10-B	BLACK	M-8	10	20171	0,2	12
AMC 25-B	BLACK	M-8	25	20173	0,205	27
AMC 50-B	BLACK	M-8	50	20175	0,254	58
AMC 75-B	BLACK	M-8	75	20177	0,26	80
AMC 100-B	BLACK	M-8	100	20179	0,29	109

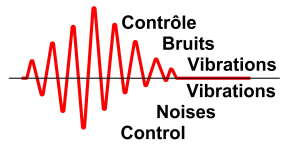
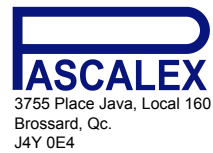
Medium Series

This is a range designed for the suspension of machinery operating at 500 rpm. The range of loads to be carried varies from 8 to 150 kg per support point.

Vibrabsorber

Type	Spring color	Max. Load (kg)	Code	Weight (kg)	K (N/mm)
AMC 8	BLACK	8	20139	0,192	3,3
AMC 15	BLACK	15	20126	0,285	8,5
AMC 25	BLACK	25	20101	0,285	12
AMC 50	BLUE	50	20103	0,274	28
AMC 75	GREY	75	20105	0,298	38
AMC 100	BEIGE	100	20107	0,353	52
AMC 125	WHITE	125	20300	0,395	58
AMC 150	BLACK	150	20303	0,355	79
Round rubber base	-	-	20109	0,085	
Rectangular base	-	-	612014	0,175	
Rectangular base+Sylomer®	-	-	20106	0,172	





Bases

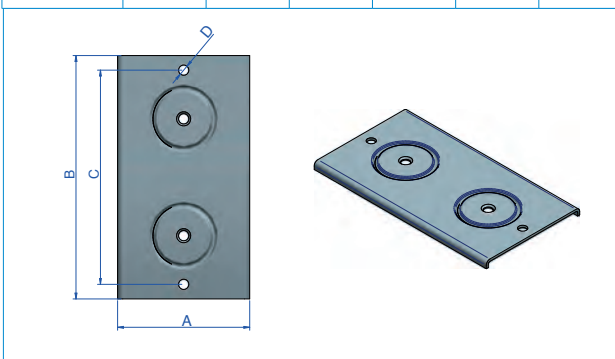
Using the medium series spring mounts together with these bases you can create your own spring mount sets yourself. Especially interesting for stockists that wish to keep low number of references in stock.

1AMC

Type	A (mm)	B (mm)	C (mm)	D (mm)	E (mm)	Code	Weight (kg)
Small	100	71	80	8,5	M-8	612034	0,189
Big	140	100	120	12	M-12	612035	0,347

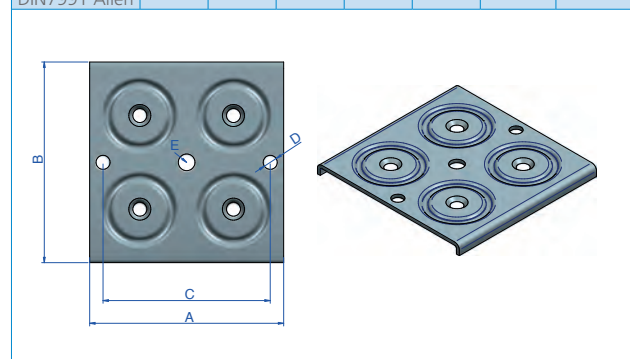
2AMC

Type	A (mm)	B (mm)	C (mm)	D (mm)	Code	Weight (kg)
Ø54	77	196	166	10,5	612045	0,433
Ø75	230	105	200	10,5	612029	0
Ø90	260	125	230	10,5	612031	0,795



4AMC

Type	A (mm)	B (mm)	C (mm)	D (mm)	E (mm)	Code	Weight (kg)
Ø54	145	150	125	10,5	M-12	612030	0,565
Ø75	210	205	186	10,5	M-16	612032	1,06
Ø90	250	230	230	10,5	M-16	612033	1,48
M12x25 Screw DIN7991 Allen						611278	0,026



1 AMC Dual cup

With dual cup springs you can do yourself the installation of the springs.

Vibrabsorber

Type	Spring color	A (mm)	B (mm)	C (mm)	Max. Load (kg)	Code	Weight (kg)	K (N/mm)
150	BLUE	75	116	M-12	150	20309	1,102	52
200	WHITE	75	116	M-12	200	20310	1,138	66
250	BLACK	75	116	M-12	250	20320	1,225	83
350	CREAM	75	116	M-12	350	20330	1,392	114
500	LIGHT GREY	90	116	M-12	500	20340	2,56	268
750	GREEN	90	116	M-12	750	20350	2,56	407

4 AMC T

The 4 AMC T spring mount is necessary in all machinery, which, by virtue of its design, has reciprocating or rotating parts, creates vibration to some degree through the imbalance of the moving parts. This vibration produced by a machine leads to different problems, such as a reduction in

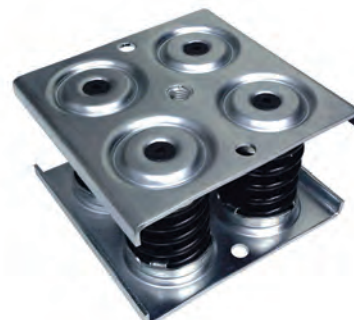
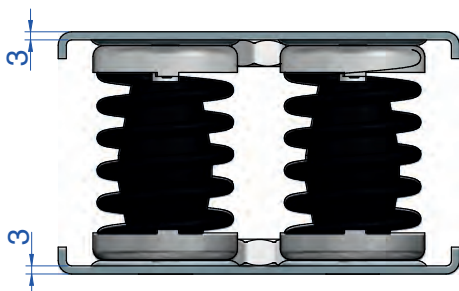
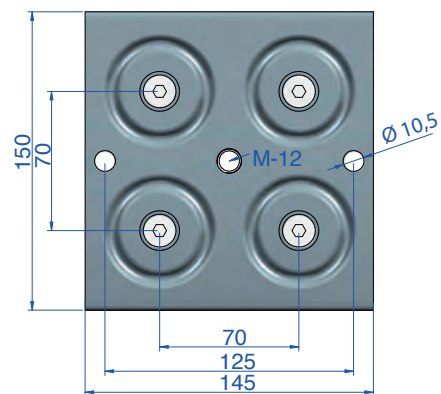
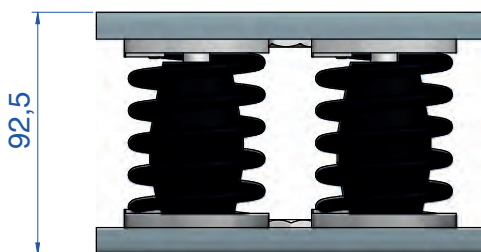
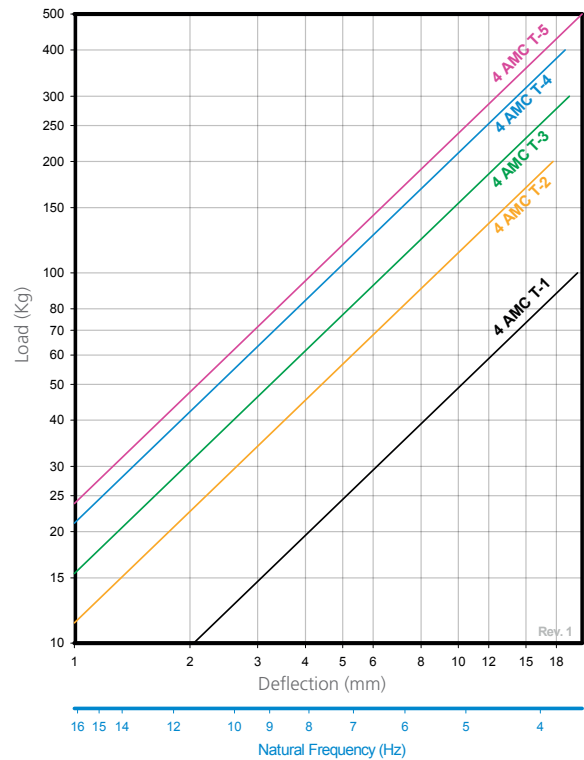
ASCALEX
3755 Place Java, Local 160
Brossard, Qc.
J4Y 0E4

Contrôle
Bruits
Vibrations
Vibrations
Noises
Control

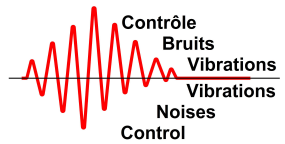
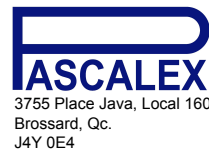
the machine's useful life through part wear, plus the transmission of this vibration to other non-insulated adjacent structures, giving rise to problems of noise and vibration transmission. It is therefore important to install a spring mount to machinery.

Type	Spring color	Min. Load (kg)	Max. Load (kg)	Code	Weight (kg)	K N/mm
4 AMC T-1	BLACK	40	100	20011	6,423	48
4 AMC T-2	BLUE	100	200	20012	6,645	111
4 AMC T-3	GREY	200	300	20013	6,899	151
4 AMC T-4	BEIGE	300	400	20014	6,954	207
4 AMC T-5	WHITE	400	500	20015	7,122	234

LOAD VS DEFLECTION GRAPH
4 AMC T



1 AMC



The 1 AMC spring mount is necessary in all machinery, which, by virtue of its design, has reciprocating or rotating parts, creates vibration to some degree through the imbalance of the moving parts. This vibration produced by a machine leads to different problems, such as a reduction in

the machine's useful life through part wear, plus the transmission of this vibration to other non-insulated adjacent structures, giving rise to problems of noise and vibration transmission. It is therefore important to install a spring mount to machinery.

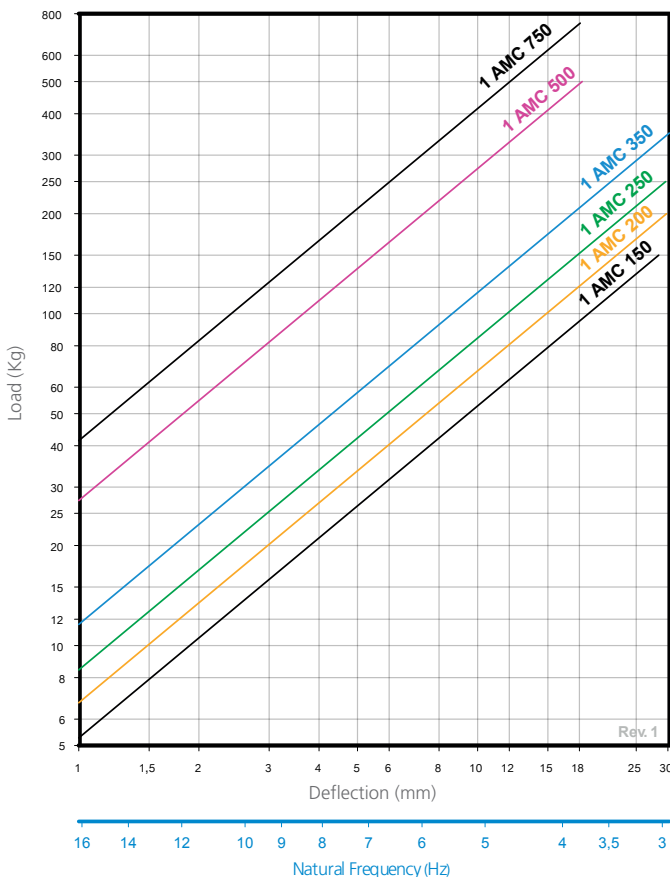
Vibrabsorber + by getzner **sylomer**

Type	Spring color	A (mm)	B (mm)	C (mm)	D (mm)	E (mm)	F (mm)	G (mm)	Max. Load (kg)	Code	Weight (kg)	K (N/mm)
1 AMC 150 + Sylomer®	BLUE	75	127	M-12	98,5	120	12	140	150	20371	1,102	52
1 AMC 200 + Sylomer®	WHITE	75	127	M-12	98,5	120	12	140	200	20372	1,138	66
1 AMC 250 + Sylomer®	BLACK	75	127	M-12	98,5	120	12	140	250	20373	1,225	83
1 AMC 350 + Sylomer®	CREAM	75	127	M-12	98,5	120	12	140	350	20374	1,392	114
1 AMC 500 + Sylomer®	LIGHT GREY	93	127	M-14	98,5	120	12	140	500	20375	2,56	268
1 AMC 750 + Sylomer®	GREEN	93	127	M-14	98,5	120	12	140	750	20376	3,036	407
1 AMC 150 + DB Sylomer®	BLUE	140	138	12	98,5	120	-	-	150	20459	1,59	52
1 AMC 200 + DB Sylomer®	WHITE	140	138	12	98,5	120	-	-	200	20520	1,63	66
1 AMC 250 + DB Sylomer®	BLACK	140	138	12	98,5	120	-	-	250	20460	1,66	83
1 AMC 350 + DB Sylomer®	CREAM	140	138	12	98,5	120	-	-	350	20538	0	114
1 AMC 500 + DB Sylomer®	LIGHT GREY	140	138	12	98,5	120	-	-	500	20433	2,1	268
1 AMC 750 + DB Sylomer®	GREEN	140	138	12	98,5	120	-	-	750	20429	0	407

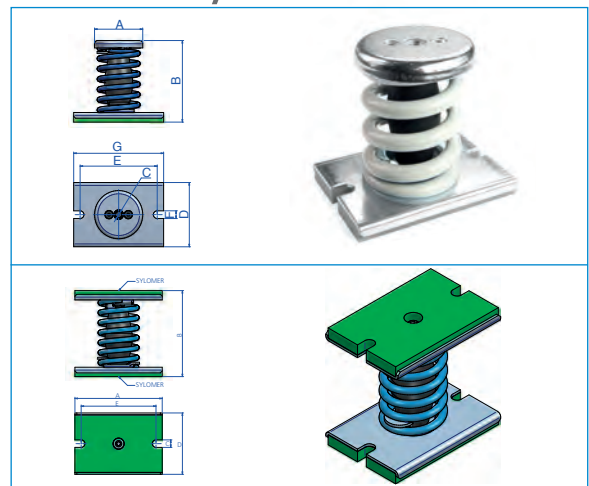
Vibrabsorber

Type	Spring color	A (mm)	B (mm)	C (mm)	D (mm)	E (mm)	F (mm)	G (mm)	Max. Load (kg)	Code	Weight (kg)	K (N/mm)
1 AMC 150	BLUE	75	122	M-12	80	87	10	115	150	20301	1,102	52
1 AMC 200	WHITE	75	122	M-12	80	87	10	115	200	20311	1,138	66
1 AMC 250	BLACK	75	122	M-12	80	87	10	115	250	20321	1,225	83
1 AMC 350	CREAM	75	122	M-12	80	87	10	115	350	20331	1,392	114
1 AMC 500	LIGHT GREY	93	120	M-14	100	120	12	150	500	20341	2,56	268
1 AMC 750	GREEN	93	120	M-14	100	120	12	150	750	20351	3,036	407

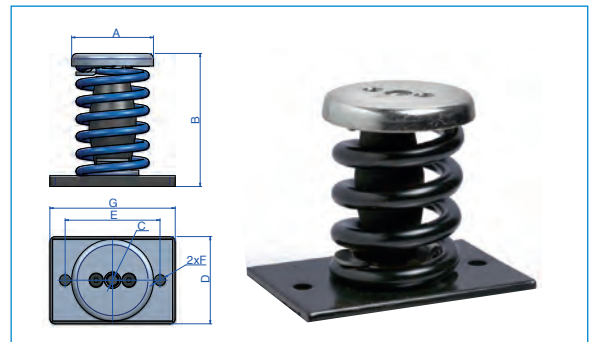
LOAD VS DEFLECTION DIAGRAM
AMC-MECANOCAUCHO® 1AMC



Vibrabsorber + by getzner **sylomer**



Vibrabsorber



2 AMC

The 2 AMC spring mount is necessary in all machinery, which, by virtue of its design, has reciprocating or rotating parts, creates vibration to some degree through the imbalance of the moving parts. This vibration produced by a machine leads to different problems, such as a reduction in

the machine's useful life through part wear, plus the transmission of this vibration to other non-insulated adjacent structures, giving rise to problems of noise and vibration transmission. It is therefore important to install a spring mount to machinery.

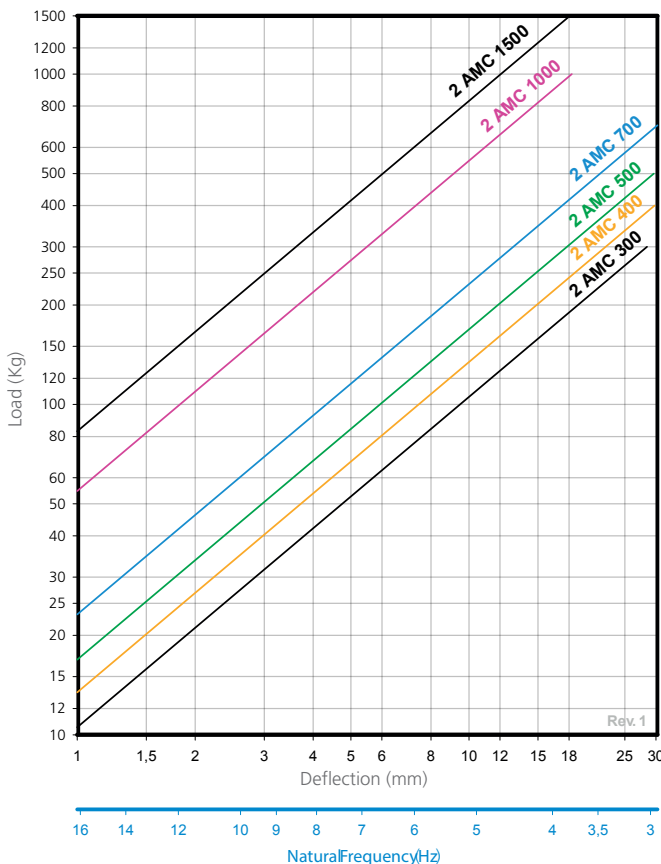
Vibrabsorber + **sylomer**[®]

Type	Spring color	A (mm)	B (mm)	C (mm)	D (mm)	E (mm)	F (mm)	G (mm)	H (mm)	Max. Load (kg)	Code	Weight (kg)	K (N/mm)
2 AMC 300+Sylomer [®]	BLUE	200	136	75	12	170	220	244	81	300	20471	3,1	103
2 AMC 400+Sylomer [®]	WHITE	200	136	75	12	170	220	244	81	400	20472	3,172	132
2 AMC 500+Sylomer [®]	BLACK	200	136	75	12	170	220	244	81	500	20473	3,348	166
2 AMC 700+Sylomer [®]	CREAM	200	136	75	12	170	220	244	81	700	20474	3,7	227
2 AMC 1000+Sylomer [®]	LIGHT GREY	250	136	100	14	210	270	298	106	1000	20475	5,9	536
2 AMC 1500+Sylomer [®]	GREEN	250	136	100	14	210	270	298	106	1500	20476	6,844	813

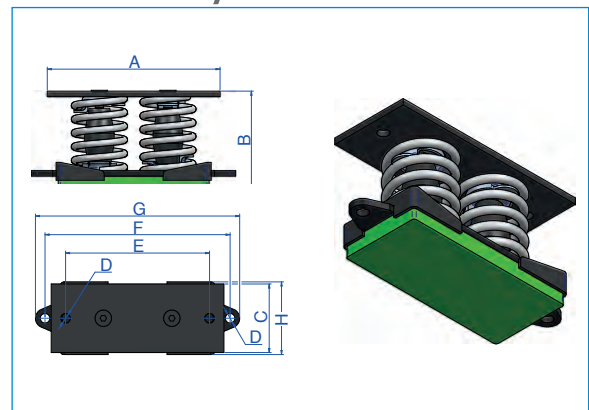
Vibrabsorber

Type	Spring color	A (mm)	B (mm)	C (mm)	D (mm)	E (mm)	F (mm)	G (mm)	H (mm)	Max. Load (kg)	Code	Weight (kg)	K (N/mm)
2 AMC 300	BLUE	200	124	75	12	170	-	-	-	300	20401	3,1	103
2 AMC 400	WHITE	200	124	75	12	170	-	-	-	400	20411	3,172	132
2 AMC 500	BLACK	200	124	75	12	170	-	-	-	500	20421	3,348	166
2 AMC 700	CREAM	200	124	75	12	170	-	-	-	700	20431	3,7	227
2 AMC 1.000	LIGHT GREY	250	124	100	14	210	-	-	-	1000	20441	5,9	536
2 AMC 1.500	GREEN	250	124	100	14	210	-	-	-	1500	20451	6,844	813

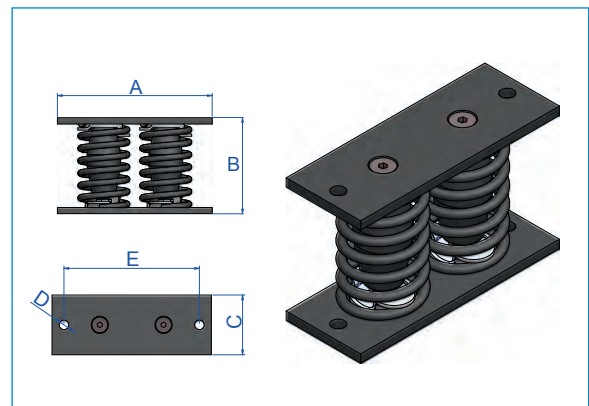
LOAD VS DEFLECTION DIAGRAM
AMC-MECANOCAUCHO[®] 2AMC



Vibrabsorber + **sylomer**[®]



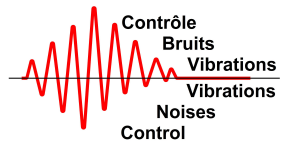
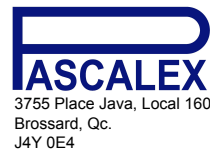
Vibrabsorber



3 AMC

The 3 AMC spring mount is necessary in all machinery, which, by virtue of its design, has reciprocating or rotating parts, creates vibration to some degree through the imbalance of the moving parts. This vibration produced by a machine leads to different problems, such as a reduction

in the machine's useful life through part wear, plus the transmission of this vibration to other non-insulated adjacent structures, giving rise to problems of noise and vibration transmission. It is therefore important to install a spring mount to machinery.



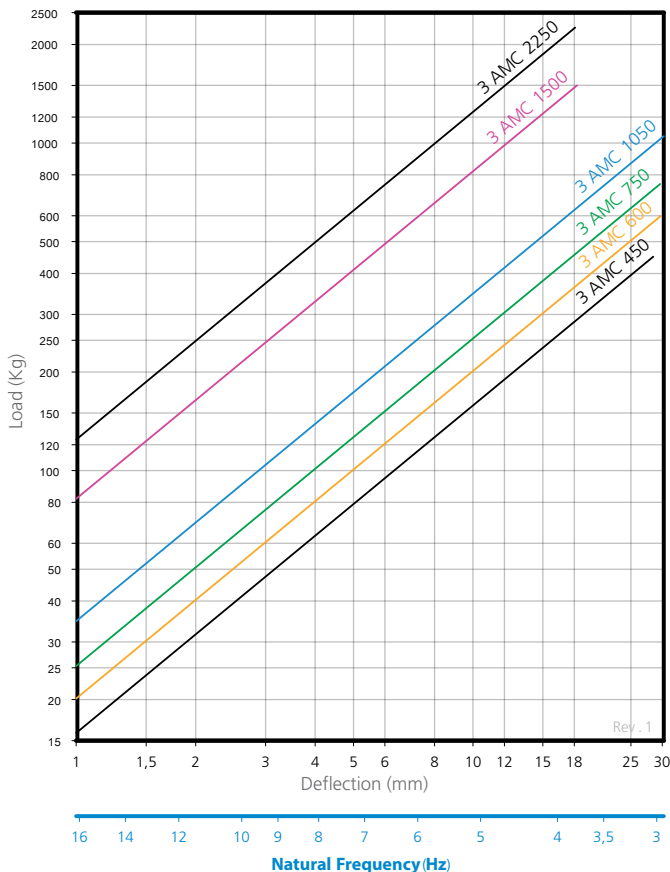
Vibrabsorber + by getzner **sylomer®**

Type	Spring color	A (mm)	B (mm)	C (mm)	D (mm)	E (mm)	F (mm)	G (mm)	H (mm)	I (mm)	Max. Load (kg)	Code	Weight (kg)	K (N/mm)
3 AMC 450+Sylomer®	BLUE	196,3	136	M-16	12	180	176	207,7	110	201,4	450	20571	4,6	155
3 AMC 600+Sylomer®	WHITE	196,3	136	M-16	12	180	176	207,7	110	201,4	600	20572	4,714	198
3 AMC 750+Sylomer®	BLACK	196,3	136	M-16	12	180	176	207,7	110	201,4	750	20573	4,978	248
3 AMC 1050+Sylomer®	CREAM	196,3	136	M-16	12	180	176	207,7	110	201,4	1050	20574	5,524	341
3 AMC 1500+Sylomer®	LIGHT GREY	246	136	M-20	14	220	219	255,7	136	251	1500	20575	8,564	804
3 AMC 2250+Sylomer®	GREEN	246	136	M-20	14	220	219	255,7	136	251	2250	20576	9,964	1220

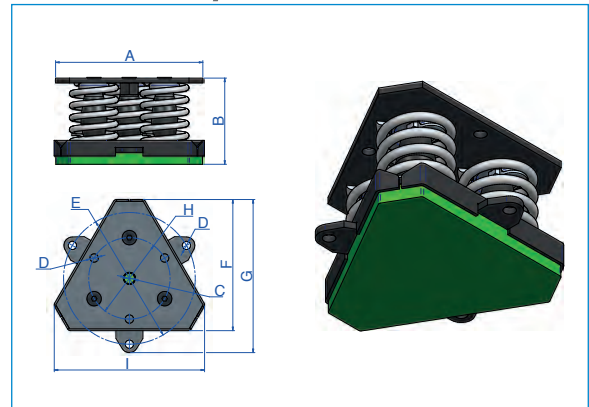
Vibrabsorber

Type	Spring color	A (mm)	B (mm)	C (mm)	D (mm)	E (mm)	F (mm)	G (mm)	H (mm)	I (mm)	Max. Load (kg)	Code	Weight (kg)	K (N/mm)
3 AMC 450	BLUE	196,3	124	M-16	12	-	-	-	-	-	450	20501	4,6	155
3 AMC 600	WHITE	196,3	124	M-16	12	-	-	-	-	-	600	20511	4,714	198
3 AMC 750	BLACK	196,3	124	M-16	12	-	-	-	-	-	750	20521	4,978	248
3 AMC 1050	CREAM	196,3	124	M-16	12	-	-	-	-	-	1050	20531	5,524	341
3 AMC 1500	LIGHT GREY	242	124	M-20	14	-	-	-	-	-	1500	20541	8,564	804
3 AMC 2250	GREEN	242	124	M-20	14	-	-	-	-	-	2250	20551	9,964	1220

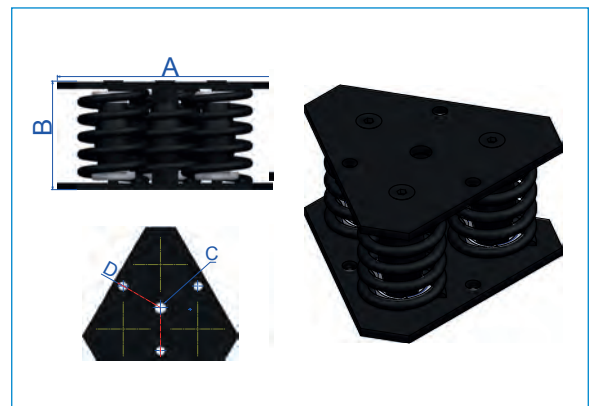
LOAD VS DEFLECTION DIAGRAM
AMC-MECANOCAUCHO® 3AMC



Vibrabsorber + by getzner **sylomer®**



Vibrabsorber



4 AMC

The 4 AMC spring mount is necessary in all machinery, which, by virtue of its design, has reciprocating or rotating parts, creates vibration to some degree through the imbalance of the moving parts. This vibration produced by a machine leads to different problems, such as a reduction in

the machine's useful life through part wear, plus the transmission of this vibration to other non-insulated adjacent structures, giving rise to problems of noise and vibration transmission. It is therefore important to install a spring mount to machinery.

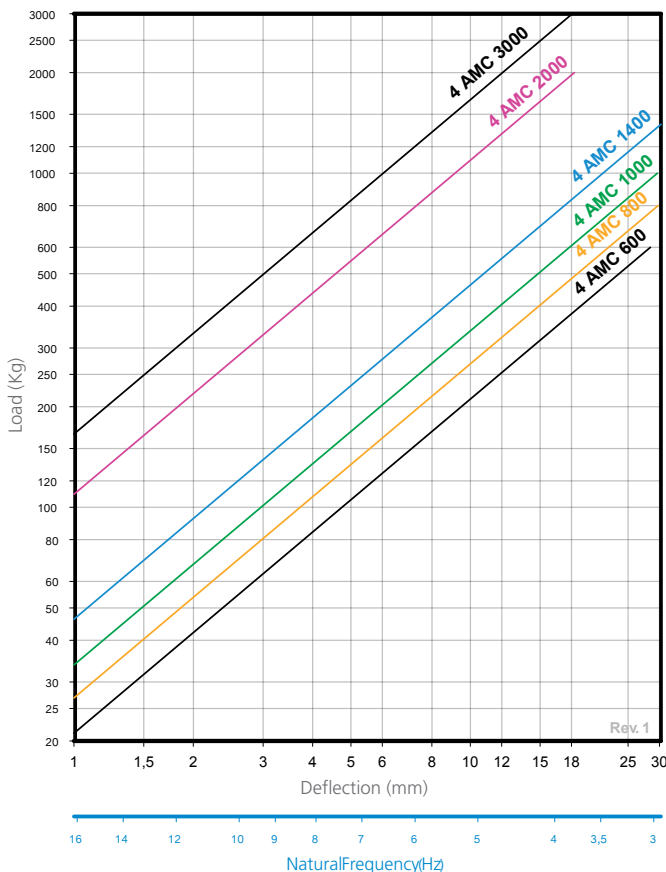
Vibrabsorber + **sylomer**[®]

Type	Spring color	A (mm)	B (mm)	C (mm)	D (mm)	E (mm)	F (mm)	G (mm)	H (mm)	I (mm)	Max. Load (kg)	Code	Weight (kg)	K (N/mm)
4 AMC 600+Sylomer [®]	BLUE	200	136	M-16	150	12	170	190	214	156	600	20671	6,412	207
4 AMC 800+Sylomer [®]	WHITE	200	136	M-16	150	12	170	190	214	156	800	20672	6,572	264
4 AMC 1000+Sylomer [®]	BLACK	200	136	M-16	150	12	170	190	214	156	1000	20673	6,7	331
4 AMC 1400+Sylomer [®]	CREAM	200	136	M-16	150	12	170	190	214	156	1400	20674	7,636	454
4 AMC 2000+Sylomer [®]	LIGHT GREY	250	136	M-20	200	14	210	260	288	206	2000	20675	12,1	1072
4 AMC 3000+Sylomer [®]	GREEN	250	136	M-20	200	14	210	260	288	206	3000	20676	13,962	1627

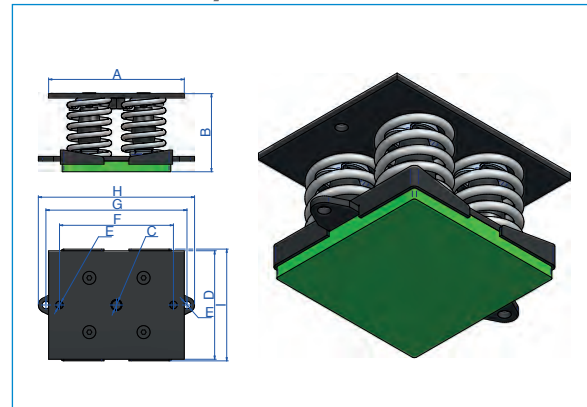
Vibrabsorber

Type	Spring color	A (mm)	B (mm)	C (mm)	D (mm)	E (mm)	F (mm)	G (mm)	H (mm)	I (mm)	Max. Load (kg)	Code	Weight (kg)	K (N/mm)
4 AMC 600	BLUE	200	124	M-16	150	12	170	-	-	-	600	20601	6,412	207
4 AMC 800	WHITE	200	124	M-16	150	12	170	-	-	-	800	20611	6,572	264
4 AMC 1000	BLACK	200	124	M-16	150	12	170	-	-	-	1000	20621	6,7	331
4 AMC 1400	CREAM	200	124	M-16	150	12	170	-	-	-	1400	20631	7,636	454
4 AMC 2000	LIGHT GREY	250	124	M-20	200	14	210	-	-	-	2000	20641	12,1	1072
4 AMC 3000	GREEN	250	124	M-20	200	14	210	-	-	-	3000	20651	13,962	1627

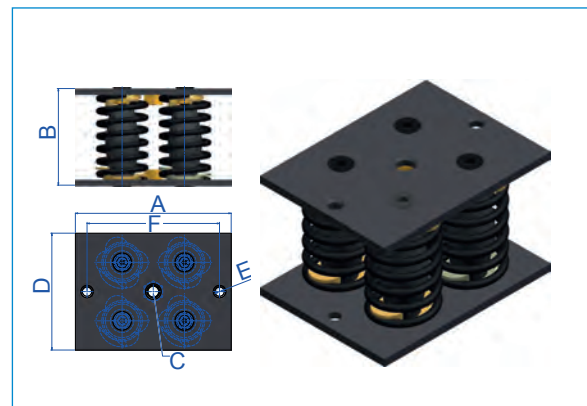
LOAD VS DEFLECTION DIAGRAM
AMC-MECANOCAUCHO[®] 4AMC



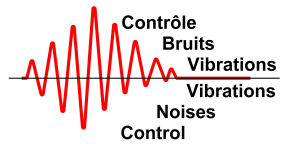
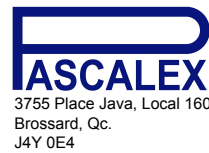
Vibrabsorber + **sylomer**[®]



Vibrabsorber



5 AMC



The 5 AMC spring mount is necessary in all machinery, which, by virtue of its design, has reciprocating or rotating parts, creates vibration to some degree through the imbalance of the moving parts. This vibration produced by a machine leads to different problems, such as a reduction in

the machine's useful life through part wear, plus the transmission of this vibration to other non-insulated adjacent structures, giving rise to problems of noise and vibration transmission. It is therefore important to install a spring mount to machinery.

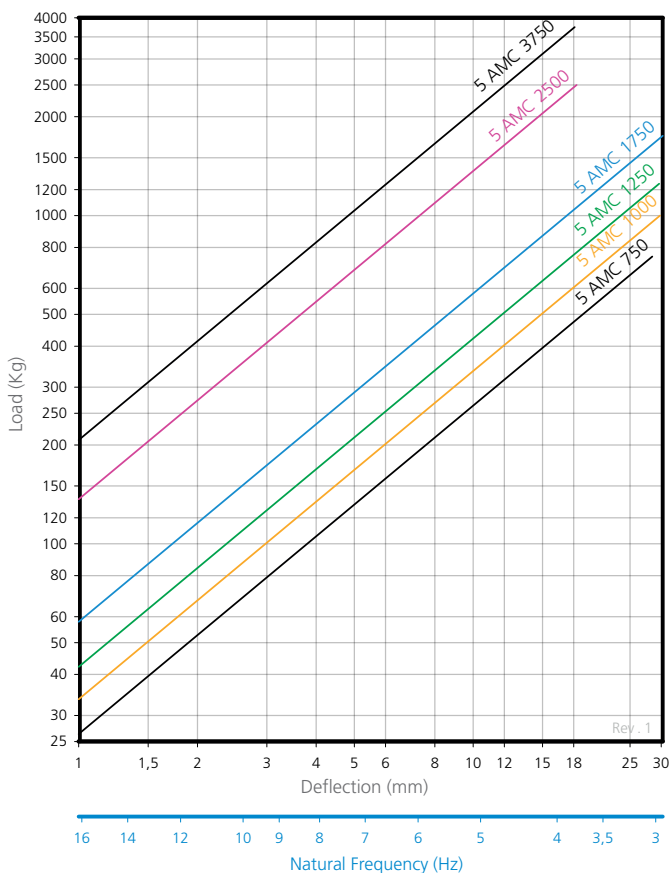
Vibrabsorber + by getzner **sylomer®**

Type	Spring color	A (mm)	B (mm)	C (mm)	D (mm)	E (mm)	F (mm)	G (mm)	H (mm)	Max. Load (kg)	Code	Weight (kg)	K (N/mm)
5 AMC 750+Sylomer®	BLUE	280	136	150	16	251	290	322	156	750	20771	8,502	259
5 AMC 1000+Sylomer®	WHITE	280	136	150	16	251	290	322	156	1000	20772	8,692	330
5 AMC 1250+Sylomer®	BLACK	280	136	150	16	251	290	322	156	1250	20773	9,162	414
5 AMC 1750+Sylomer®	CREAM	280	136	150	16	251	290	322	156	1750	20774	10,037	568
5 AMC 2500+Sylomer®	LIGHT GREY	350	136	200	18	315	360	396	206	2500	20775	15,716	1341
5 AMC 3750+Sylomer®	GREEN	350	136	200	18	315	360	396	206	3750	20776	18,056	2033

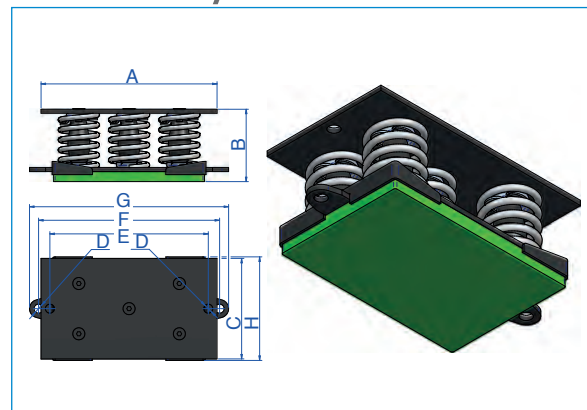
Vibrabsorber

Type	Spring color	A (mm)	B (mm)	C (mm)	D (mm)	E (mm)	F (mm)	G (mm)	H (mm)	Max. Load (kg)	Code	Weight (kg)	K (N/mm)
5 AMC 750	BLUE	280	124	150	16	251	-	-	-	750	20701	8,502	259
5 AMC 1.000	WHITE	280	124	150	16	251	-	-	-	1000	20711	8,692	330
5 AMC 1.250	BLACK	280	124	150	16	251	-	-	-	1250	20721	9,162	414
5 AMC 1.750	CREAM	280	124	150	16	251	-	-	-	1750	20731	10,037	568
5 AMC 2.500	LIGHT GREY	350	124	200	18	315	-	-	-	2500	20741	15,716	1341
5 AMC 3.750	GREEN	350	124	200	18	315	-	-	-	3750	20751	18,056	2033

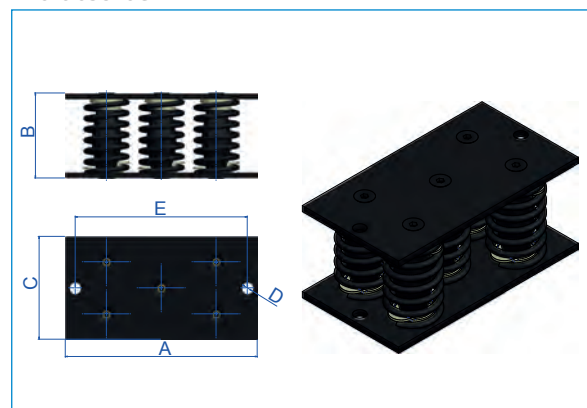
LOAD VS DEFLECTION DIAGRAM
AMC-MECANOCAUCHO® 5AMC



Vibrabsorber + by getzner **sylomer®**



Vibrabsorber



6 AMC

The 6 AMC spring mount is necessary in all machinery, which, by virtue of its design, has reciprocating or rotating parts, creates vibration to some degree through the imbalance of the moving parts. This vibration produced by a machine leads to different problems, such as a reduction in

the machine's useful life through part wear, plus the transmission of this vibration to other non-insulated adjacent structures, giving rise to problems of noise and vibration transmission. It is therefore important to install a spring mount to machinery.

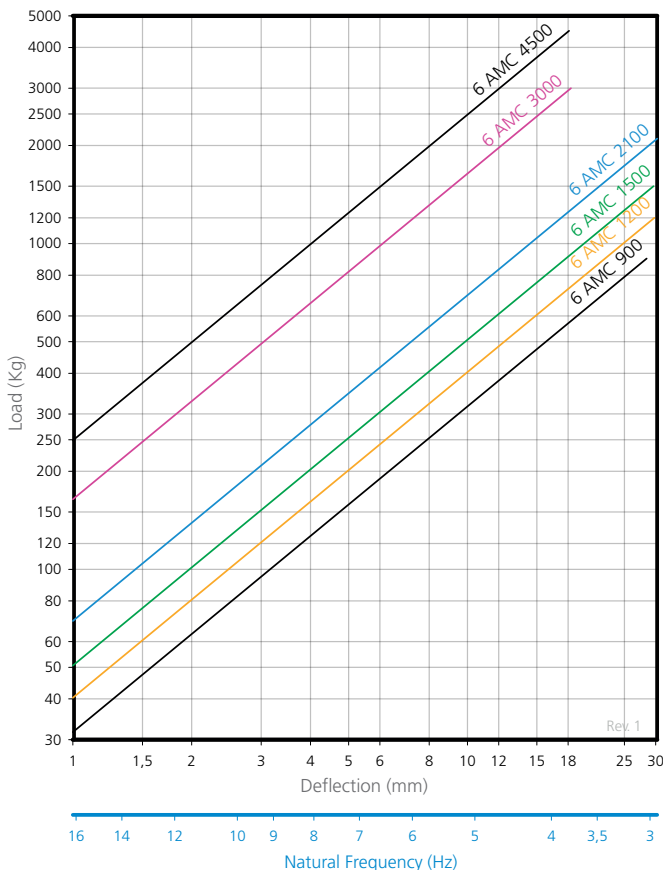
Vibrabsorber + **sylomer**[®]

Type	Spring color	A (mm)	B (mm)	C (mm)	D (mm)	E (mm)	F (mm)	G (mm)	H (mm)	Max. Load (kg)	Code	Weight (kg)	K (N/mm)
6 AMC 900+Sylomer®	BLUE	280	136	150	16	250	290	322	156	900	20871	8,928	310
6 AMC 1200+Sylomer®	WHITE	280	136	150	16	250	290	322	156	1200	20872	9,156	395
6 AMC 1500+Sylomer®	BLACK	280	136	150	16	250	290	322	156	1500	20873	9,684	497
6 AMC 2100+Sylomer®	CREAM	280	136	150	16	250	290	322	156	2100	20874	10,77	681
6 AMC 3000+Sylomer®	LIGHT GREY	350	136	200	18	300	360	396	206	3000	20875	16,848	1609
6 AMC 4500+Sylomer®	GREEN	350	136	200	18	300	360	396	206	4500	20876	19,656	2440

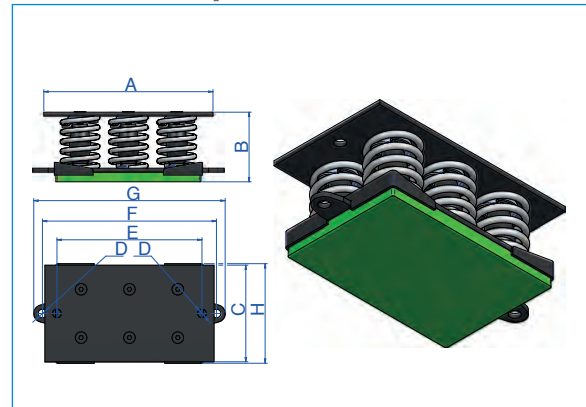
Vibrabsorber

Type	Spring color	A (mm)	B (mm)	C (mm)	D (mm)	E (mm)	F (mm)	G (mm)	H (mm)	Max. Load (kg)	Code	Weight (kg)	K (N/mm)
6 AMC 900	BLUE	280	124	150	16	250	-	-	-	900	20801	8,928	310
6 AMC 1.200	WHITE	280	124	150	16	250	-	-	-	1200	20811	9,156	395
6 AMC 1.500	BLACK	280	124	150	16	250	-	-	-	1500	20821	9,684	497
6 AMC 2.100	CREAM	280	124	150	16	250	-	-	-	2100	20831	10,77	681
6 AMC 3.000	LIGHT GREY	350	124	200	18	300	-	-	-	3000	20841	16,848	1609
6 AMC 4.500	GREEN	350	124	200	18	300	-	-	-	4500	20851	19,656	2440

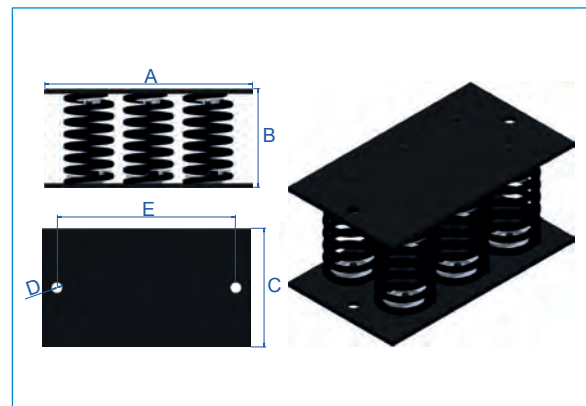
LOAD VS DEFLECTION DIAGRAM
AMC-MECANOCAUCHO® 6AMC



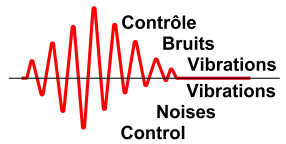
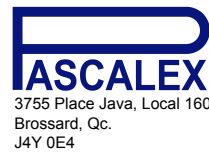
Vibrabsorber + **sylomer**[®]



Vibrabsorber



9 AMC



The 9 AMC spring mount is necessary in all machinery, which, by virtue of its design, has reciprocating or rotating parts, creates vibration to some degree through the imbalance of the moving parts. This vibration produced by a machine leads to different problems, such as a reduction in

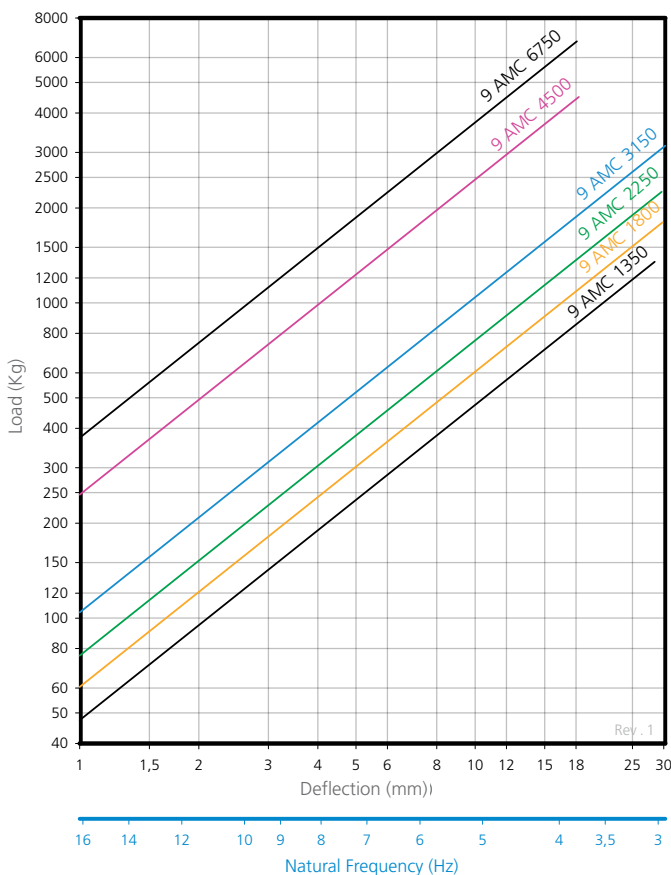
the machine's useful life through part wear, plus the transmission of this vibration to other non-insulated adjacent structures, giving rise to problems of noise and vibration transmission. It is therefore important to install a spring mount to machinery.

Vibrabsorber + by getzner **sylomer**

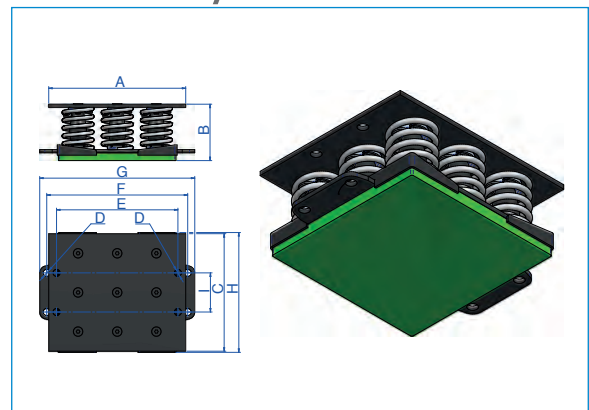
Type	Spring color	A (mm)	B (mm)	C (mm)	D (mm)	E (mm)	F (mm)	G (mm)	H (mm)	I (mm)	Max. Load (kg)	Code	Weight (kg)	K (N/mm)
9 AMC 1350+Sylomer®	BLUE	280	136	226	16	248	290	322	232	75	1350	20971	13,702	465
9 AMC 1800+Sylomer®	WHITE	280	136	226	16	248	290	322	232	75	1800	20972	14,044	593
9 AMC 2250+Sylomer®	BLACK	280	136	226	16	248	290	322	232	75	2250	20973	14,836	745
9 AMC 3150+Sylomer®	CREAM	280	136	226	16	248	290	322	232	75	3150	20974	16,465	1022
9 AMC 4500+Sylomer®	LIGHT GREY	350	136	300	18	310	360	396	306	100	4500	20975	27,547	2413
9 AMC 6750+Sylomer®	GREEN	350	136	300	18	310	360	396	306	100	6750	20976	31,75	3660

Vibrabsorber

Type	Spring color	A (mm)	B (mm)	C (mm)	D (mm)	E (mm)	F (mm)	G (mm)	H (mm)	I (mm)	Max. Load (kg)	Code	Weight (kg)	K (N/mm)
9 AMC 1.350	BLUE	280	124	226	16	248	-	-	-	-	1350	20901	13,702	465
9 AMC 1.800	WHITE	280	124	226	16	248	-	-	-	-	1800	20911	14,044	593
9 AMC 2.250	BLACK	280	124	226	16	248	-	-	-	-	2250	20921	14,836	745
9 AMC 3.150	CREAM	280	124	226	16	248	-	-	-	-	3150	20931	16,465	1022
9 AMC 4.500	LIGHT GREY	350	124	300	18	310	-	-	-	-	4500	20941	27,547	2413
9 AMC 6.750	GREEN	350	124	300	18	310	-	-	-	-	6750	20951	31,75	3660



Vibrabsorber + by getzner **sylomer**



Vibrabsorber

