

CONES

DESCRIPTION

The AMC MECANOCAUCHO® cones work the rubber in shear compression. They are composed of two parallel conical metal parts. They have two washers, one as a buffer and the other for centering.

TECHNICAL CHARACTERISTICS

- The AMC MECANOCAUCHO® Cone mounts are safe and stable elements. They do not allow the suspended elements to tilt, while being flexible enough to avoid the transmission of noise and vibration through the structure.
- They are supplied with stop and centering washers. This renders deflection above the limits of the Mecanocaucho® Cones impossible, even at extreme loads.
- The washers protect the natural rubber (which is highly elastic and highly resistant) from ozone and aging, as well as from metal knocks and dripping oil. The characteristic deflection curves of the AMC MECANOCAUCHO® Cone mounts with centering washer are quite linear, increasing progressively as the load increases. Thanks to this they can safely dampen overloads of up to three times the maximum admissible load.

APPLICATIONS

The AMC MECANOCAUCHO® cones have been designed to use them in engines and auxiliary machinery for static applications and for applications in all type of vehicles. Also used for cabs. You can contact our technical department.

CONICAL MOUNTS WITH CUTOUTS

The cutouts on the rubber section offer different horizontal/vertical stiffness ratios. This feature is specially interesting for those applications where a lower stiffness is required in one of the axes.

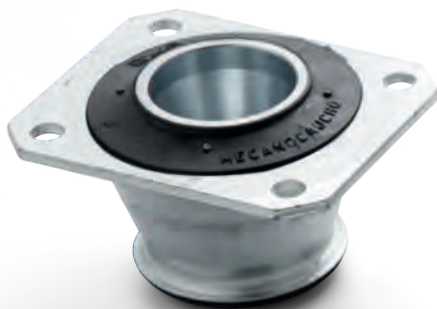
Our technical department can provide you the elastical constants and can recommend you the optimal position of the cutouts.



CONE WITH CUTOUTS

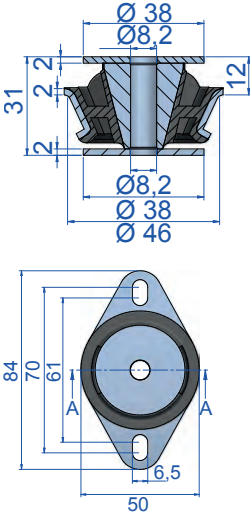
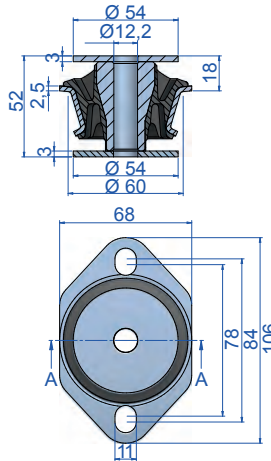
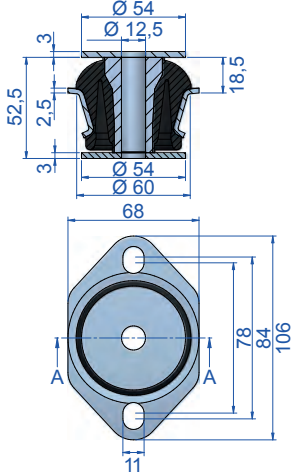
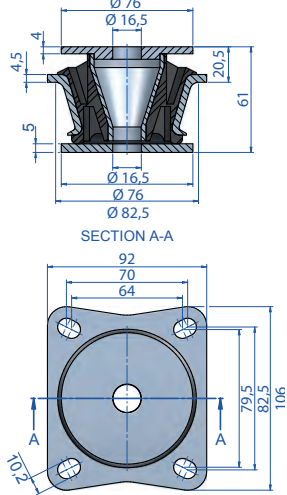
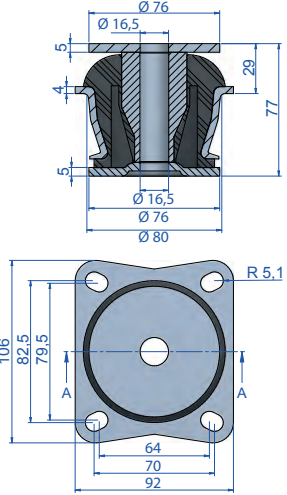
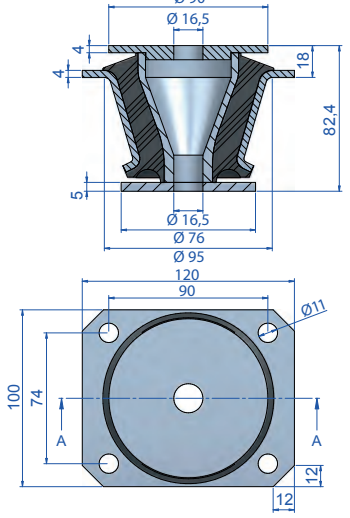
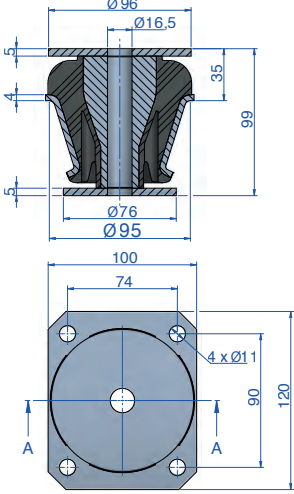
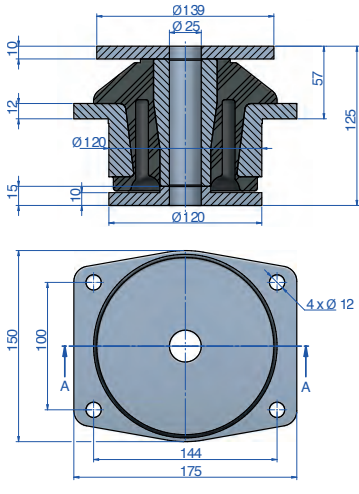
Type	Weight (gr.)	Code	Load (kg)	Shore
00	126	137007	25	45 Sh
		137008	50	60 Sh
		137009	75	70 Sh
10	406	137001	75	45 Sh
		137002	140	60 Sh
		137003	210	70 Sh
12	407	137914	80	45 Sh
		137916	120	55 Sh
		137918	200	70 Sh
20	554	137031	120	45 Sh
		137034	200	60 Sh
		137039	330	70 Sh
30	1167	137041	140	40 Sh
		137043	190	50 Sh
		137042	300	60 Sh
		137044	370	70 Sh
35	1328	137065	200	45 Sh
		137067	450	60 Sh
		137068	760	70 Sh
38	1438	137961	300	40 Sh
		137962	400	50 Sh
		137963	650	60 Sh
120 NP	6890	137871	440	45 Sh
		137872	720	55 Sh

SOLID CONE

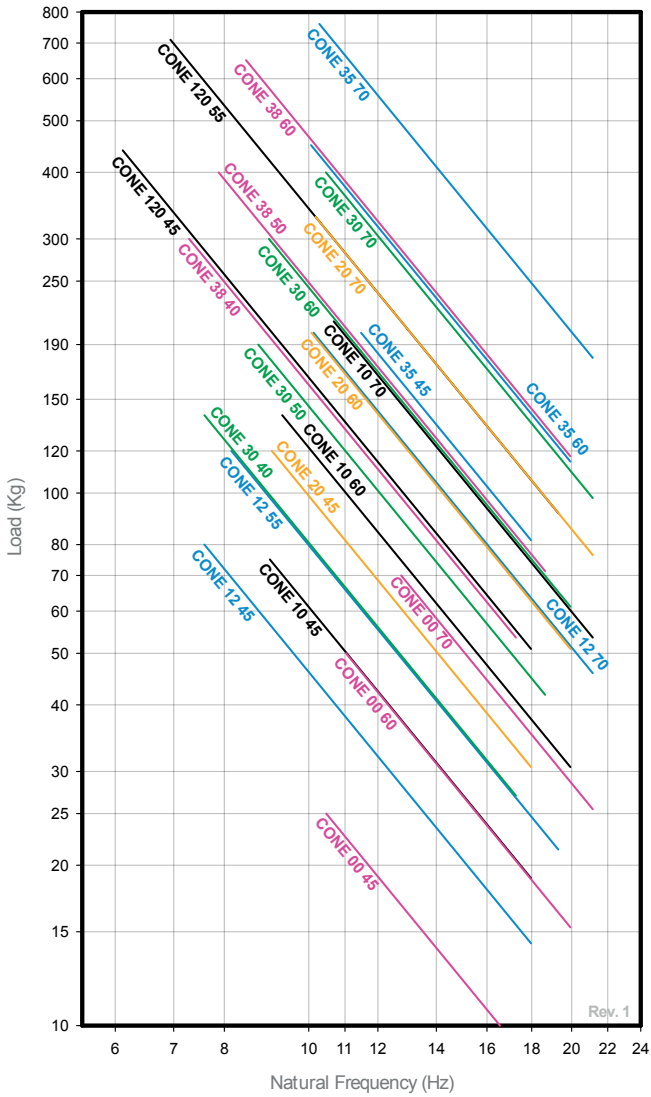


CONE WITH CUTOUTS

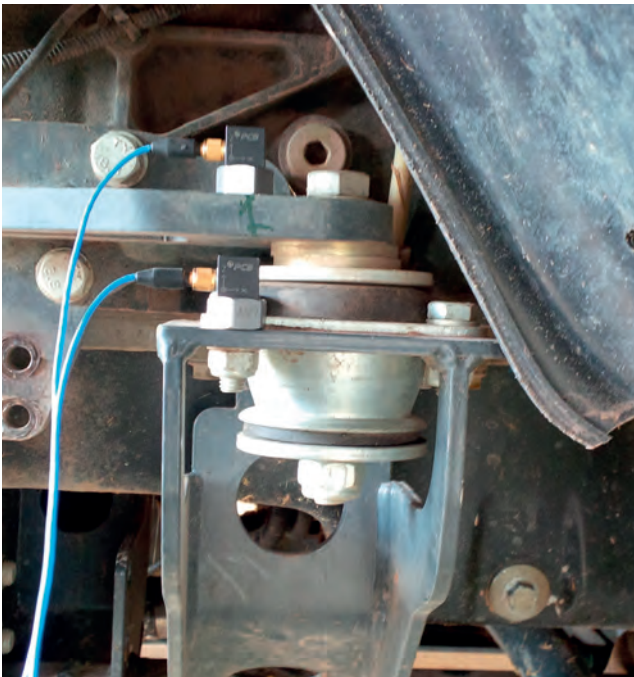
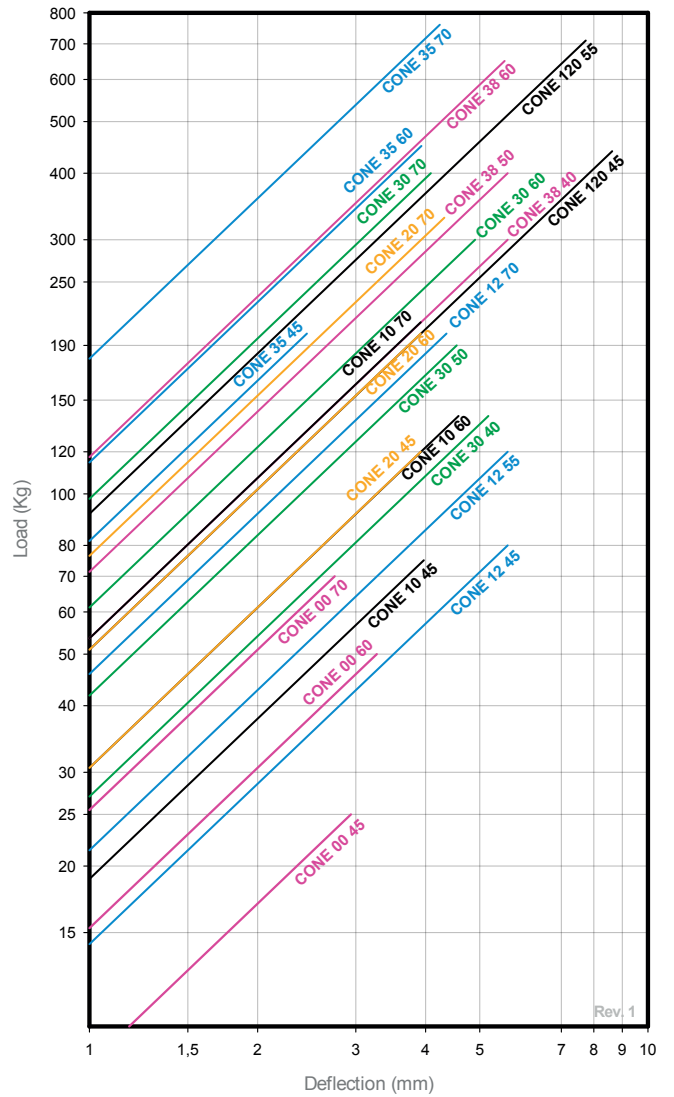


CONE TYPE 00	CONE TYPE 10	CONE TYPE 12
 <p>Top Washer Cone 00 code 610053 Lower Washer Cone 00 code 610053</p>	 <p>Top Washer Cone 10 code 611068 Lower Washer Cone 10 code 611068</p>	 <p>Top Washer Cone 12 code 611068 Lower Washer Cone 12 code 611068</p>
CONE TYPE 20	CONE TYPE 30	CONE TYPE 35
 <p>Top Washer Cone 20 code 610049 Lower Washer Cone 20 code 610050</p>	 <p>Top Washer Cone 30 code 608074 Lower Washer Cone 30 code 608125</p>	 <p>Top Washer Cone 35 code 608082 Lower Washer Cone 35 code 608097</p>
CONE TYPE 38	CONE TYPE 120 NP	
 <p>Top Washer Cone 38 code 610147 Lower Washer Cone 38 code 608074</p>	 <p>Top Washer Cone 120 code 606378 Lower Washer Cone 120 code 606379</p>	

NATURAL FREQUENCY
AMC MECANOCAUCHO® CONE WITH CUTOUTS



LOAD DEFLECTION GRAPH
AMC MECANOCAUCHO® CONE WITH CUTOUTS

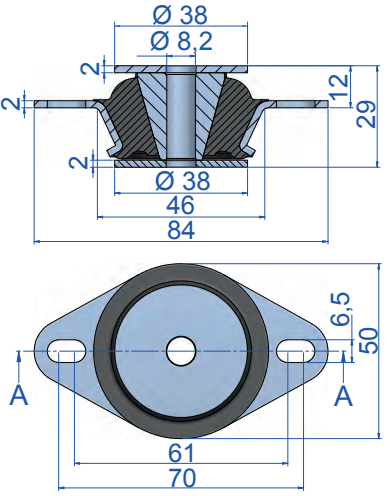
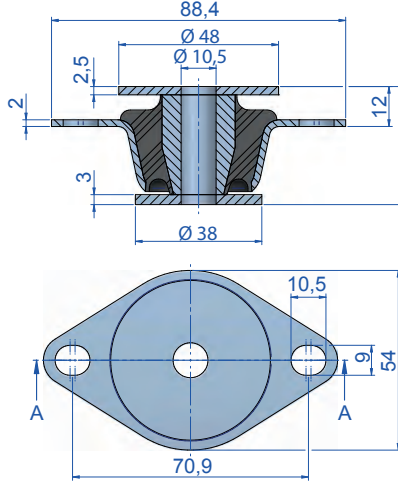
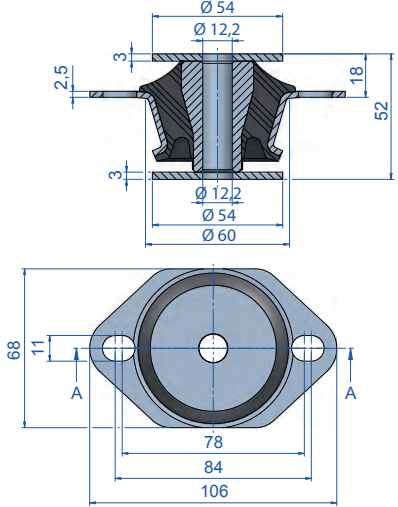
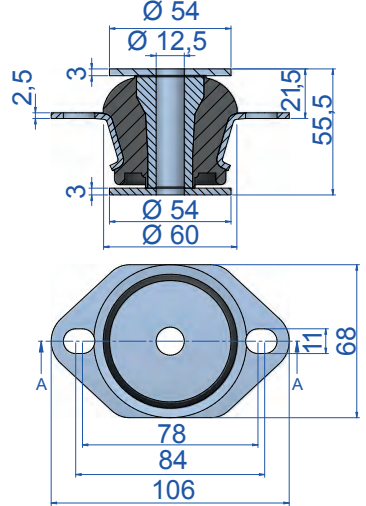
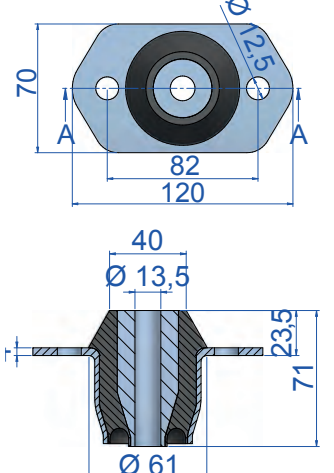
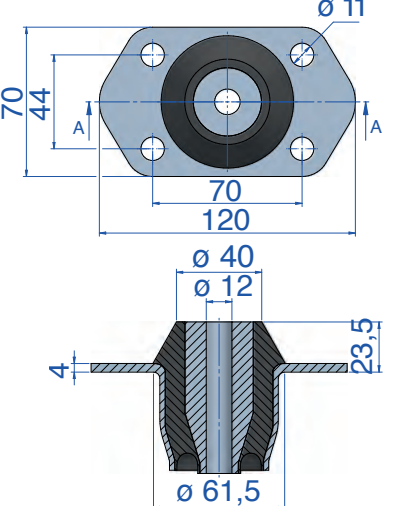
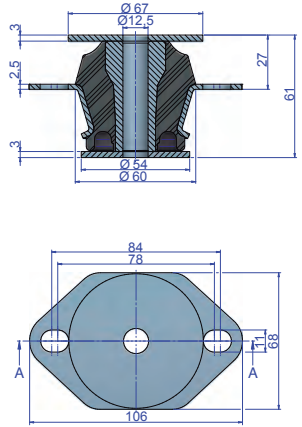
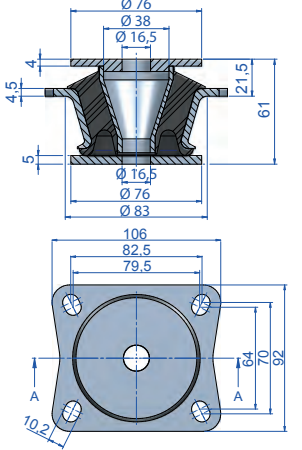
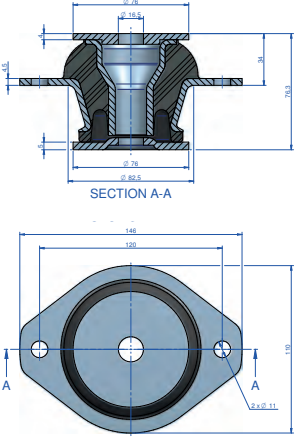
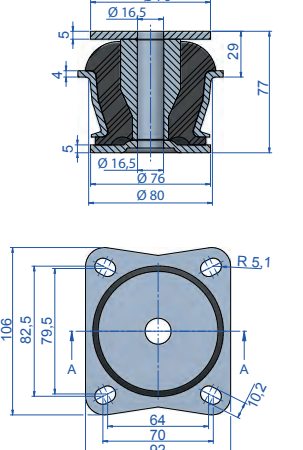




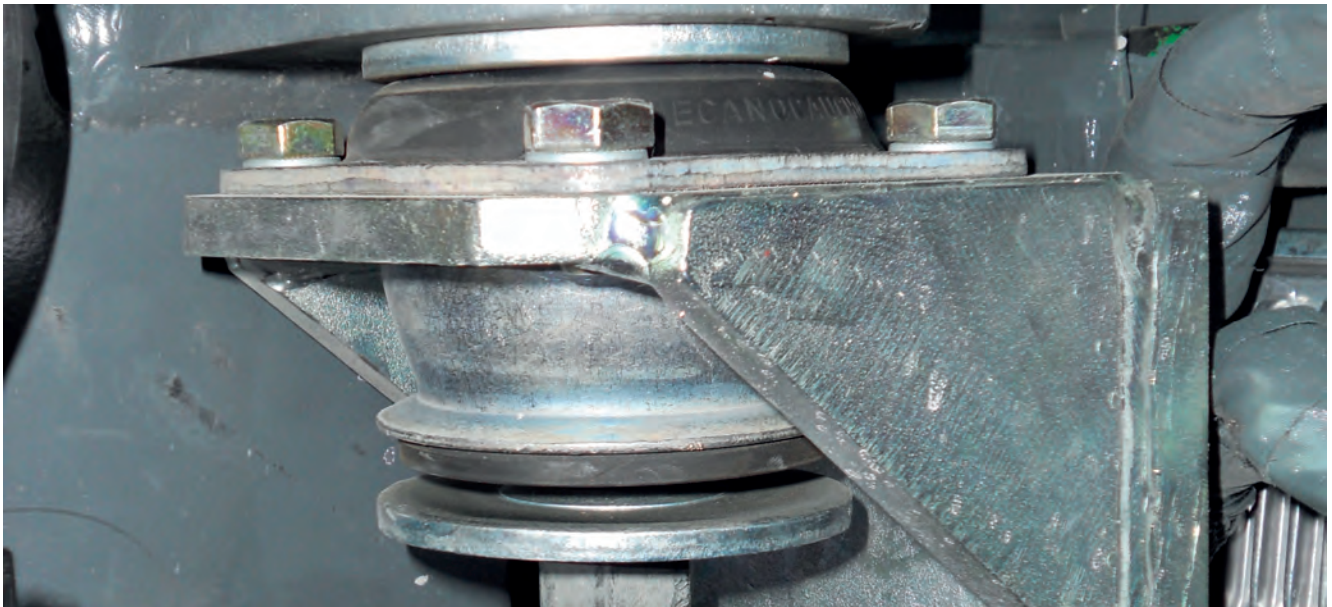
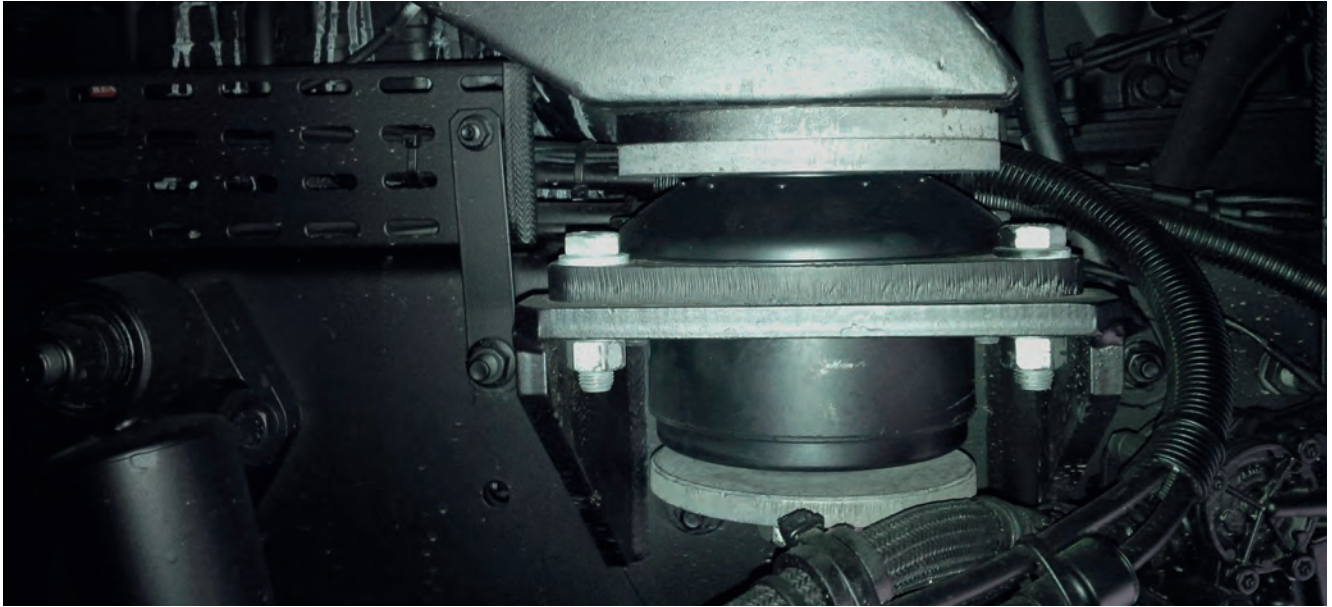
SOLID CONE

Type	Weight (gr.)	Code	Load (kg)	Shore
01	128	137005	40	45 Sh
		137006	70	60 Sh
		137015	105	70 Sh
02	132	137010	50	45 Sh
		137011	90	60 Sh
11	409	137021	100	45 Sh
		137022	180	60 Sh
		137023	270	70 Sh
13	450	137921	120	45 Sh
		137922	170	55 Sh
		137925	270	70 Sh
14 - 2 holes	643	137930	250	45 Sh
		137628	500	65 Sh
14 - 4 holes	662	137935	250	45 Sh
		137936	450	60 Sh
		137937	690	70 Sh
17	410	137903	160	45 Sh
		137904	250	60 Sh
		137905	350	70 Sh
21	560	137071	180	45 Sh
		137074	300	60 Sh
		137079	500	70 Sh
27	1175	137142	245	40 Sh
		137143	350	50 Sh
		137144	500	60 Sh
31	1188	137063	310	50 Sh
		137061	500	60 Sh
		137062	750	70 Sh
33	1462	137075	300	45 Sh
		137077	600	60 Sh
		137078	900	70 Sh
36	1410	137171	400	45 Sh
		137172	700	60 Sh
		137173	1100	70 Sh
39	1438	137981	400	40 Sh
		137982	600	50 Sh
		137983	900	60 Sh
		137984	1100	70 Sh
40	1216	137081	420	45 Sh
		137082	690	60 Sh
		137083	1080	70 Sh
45	1751	137595	420	45 Sh
		137596	700	60 Sh
		137597	1100	70 Sh
60	1821	137091	900	45 Sh
		137092	1250	60 Sh
		137093	1560	70 Sh
65	2965	137176	500	50 Sh
		137177	1100	65 Sh
		137178	1560	75 Sh
70	3450	137101	1000	45 Sh
		137102	2100	60 Sh
		137103	2500	70 Sh
75	4230	137786	850	45 Sh
		137787	1600	60 Sh
121 NG	7840	137830	1750	55 Sh
		137833	2000	65 Sh
121 NP	6940	137841	730	45 Sh
		137829	1200	55 Sh
141	1039	137891	175	50 Sh
		137893	250	60 Sh



CONE TYPE 01	CONE TYPE 02	CONE TYPE 11	
 <p>Top Washer Cone 01 code 610053 Lower Washer Cone 01 code 610053</p>	 <p>Top Washer Cone 02 code 610064 Lower Washer Cone 02 code 610064</p>	 <p>Top Washer Cone 11 code 611080 Lower Washer Cone 11 code 611080</p>	
CONE TYPE 13	CONE TYPE 14-2 holes	CONE TYPE 14-4 holes	
 <p>Top Washer Cone 13 code 611080 Lower Washer Cone 13 code 611080</p>	 <p>Top Washer Cone 14-2 code 611080 Lower Washer Cone 14-2 code 611080</p>	 <p>Top Washer Cone 14-4 code 611080 Lower Washer Cone 14-4 code 611080</p>	
CONE TYPE 17	CONE TYPE 21	CONE TYPE 27	CONE TYPE 31
 <p>Top Washer Cone 17 code 606643 Lower Washer Cone 17 code 611080</p>	 <p>Top Washer Cone 21 code 606285 Lower Washer Cone 21 code 608074</p>	 <p>Top Washer Cone 27 code 606285 Lower Washer Cone 27 code 608125</p>	 <p>Top Washer Cone 31 code 608074 Lower Washer Cone 31 code 608125</p>

CONE TYPE 33	CONE TYPE 36	CONE TYPE 39	CONE TYPE 40
<p>Top Washer Cone 33 code 608074 Lower Washer Cone 33 code 608125</p>	<p>Top Washer Cone 36 code 608082 Lower Washer Cone 36 code 608074</p>	<p>Top Washer Cone 39 code 610147 Lower Washer Cone 39 code 608074</p>	<p>Top Washer Cone 40 code 610027 Lower Washer Cone 40 code 608267</p>
CONE TYPE 45	CONE TYPE 60	CONE TYPE 65	CONE TYPE 70
<p>SECTION A-A Top washer, originally riveted Lower Washer Cone 45 code 606545</p>	<p>Top Washer Cone 60 code 610032 Lower Washer Cone 60 code 610033</p>	<p>Top Washer Cone 65 code 608144 Lower Washer Cone 65 code 608072</p>	<p>Top Washer Cone 70 code 608033 Lower Washer Cone 70 code 608149</p>
CONE TYPE 75	CONE TYPE 121 NG	CONE TYPE 121 NP	CONE TYPE 141
<p>Top Washer Cone 75 code 608332 Lower Washer Cone 75 code 606619</p>	<p>Top Washer Cone 121 code 606378 Lower Washer Cone 121 code 606379</p>	<p>Top Washer Cone 121 code 606378 Lower Washer Cone 121 code 606379</p>	<p>Top Washer Cone 141 code 610285 Lower Washer Cone 141 code 606766</p>



Installation examples.