

**DESCRIPTION**

AMC MECANOCAUCHO® AT mounts are specifically designed to provide isolation for medium to high frequency applications.

The rubber section is fully bonded to two concentric tubular parts. The inner metal is a plain tube design. The outer metal part is also mainly tubular but has a manufacturing process Flanged effect at one end with a variation in the number of attachment holes.

**TECHNICAL CHARACTERISTICS**

Type AT mounts have a radial to axial ratio of 4:1 , thus providing good horizontal stability.

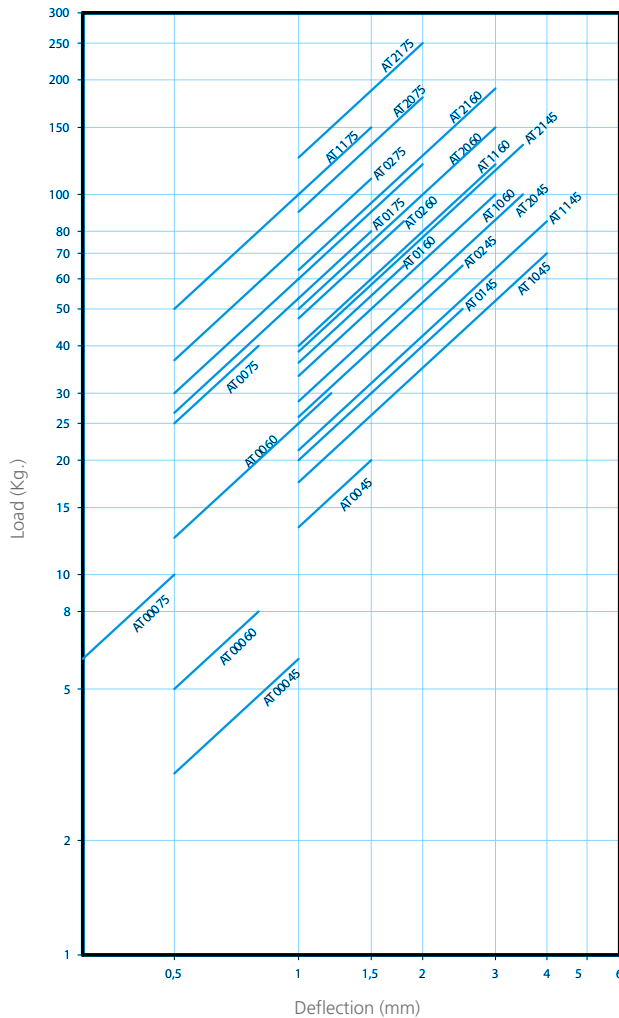
It is manufactured in three hardnesses to facilitate the choice of the most suitable mount (Soft: hardness A 45, Medium sized: hardness B 60 and Hard: hardness C 75).

**APPLICATIONS**

The AT elastic mounts can be used to great advantage for the vibration isolation of engines, piston compressors, presses, electric transformers, mobile units, machines, on concrete buttresses, etc.



NATURAL FREQUENCY  
AMC MECANOCAUCHO® AT 000-21 TYPE



LOAD DEFLECTION GRAPH  
AMC MECANOCAUCHO® AT 30-81 TYPE

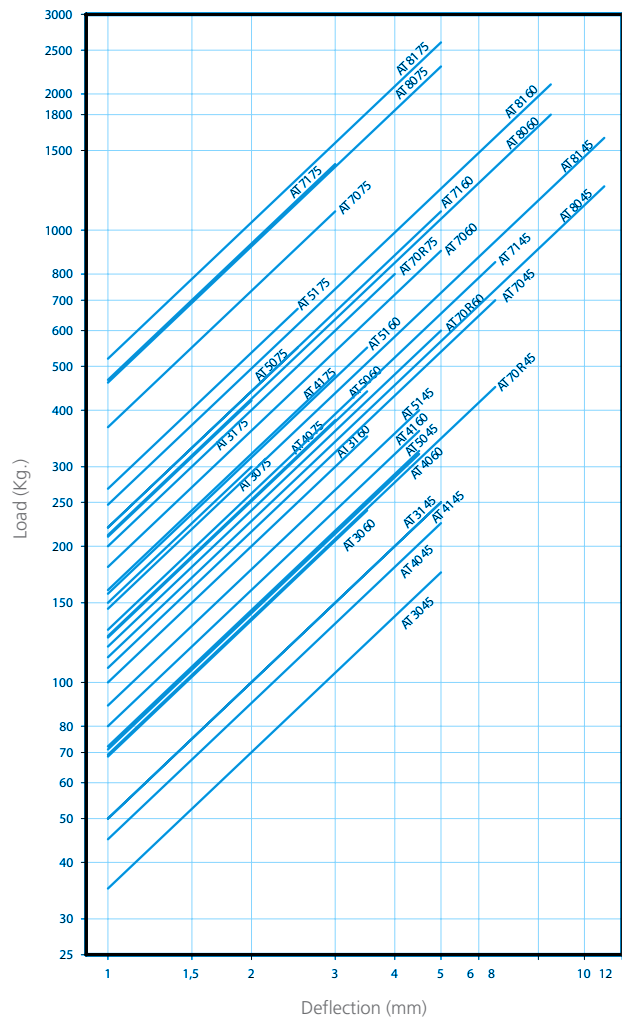


Fig. 1

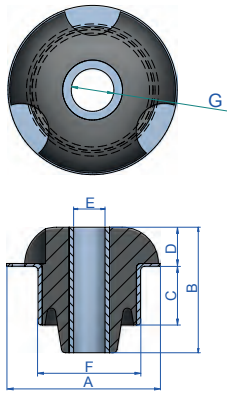


Fig. 2

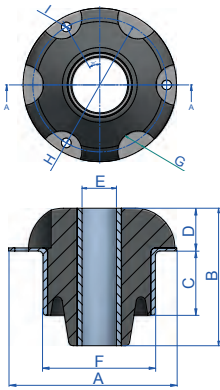


Fig. 3

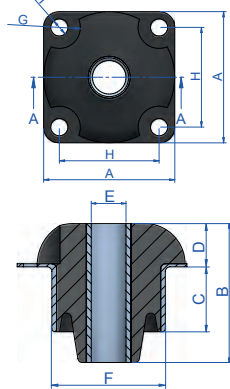
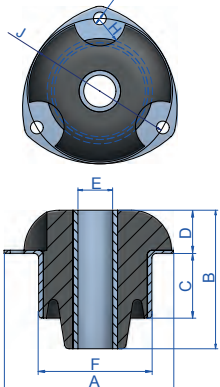


Fig. 4



| Type         | A (mm.) | B (mm.) | C (mm.) | D (mm.) | E (mm.) | F (mm.) | G (mm.) | H (mm.) | I (mm.) | J (mm.) | Weight (gr.) | Fig. | Code   | Load (kg) | Shore |
|--------------|---------|---------|---------|---------|---------|---------|---------|---------|---------|---------|--------------|------|--------|-----------|-------|
| AT 000       | 25      | 11      | 3       | 6,5     | 6,4     | 20      | 4       | 19      | 3,2     |         | 8            | 3    | 132171 | 6         | 45 Sh |
|              |         |         |         |         |         |         |         |         |         |         |              |      | 132172 | 8         | 60 Sh |
|              |         |         |         |         |         |         |         |         |         |         |              |      | 132173 | 10        | 75 Sh |
| AT 00        | 36      | 28      | 12,5    | 11,5    | 8,2     | 26      | 12      | 26      | 5,2     |         | 39           | 3    | 132101 | 20        | 45 Sh |
|              |         |         |         |         |         |         |         |         |         |         |              |      | 132102 | 30        | 60 Sh |
|              |         |         |         |         |         |         |         |         |         |         |              |      | 132103 | 40        | 75 Sh |
| AT 02        | 48      | 51      | 24      | 18      | 12,1    | 37,6    | 8       | -       | -       |         | 144          | 1    | 132104 | 65        | 45 Sh |
|              |         |         |         |         |         |         |         |         |         |         |              |      | 132105 | 85        | 60 Sh |
|              |         |         |         |         |         |         |         |         |         |         |              |      | 132106 | 110       | 75 Sh |
| AT 10        | 60      | 47      | 18      | 19      | 12,2    | 49      | 11      | 69      | 8,2     | 73      | 250          | 4    | 132175 | 70        | 45 Sh |
|              |         |         |         |         |         |         |         |         |         |         |              |      | 132176 | 100       | 60 Sh |
|              |         |         |         |         |         |         |         |         |         |         |              |      | 132177 | 120       | 75 Sh |
| AT 11        | 60      | 60      | 30,5    | 19      | 12,2    | 49      | 11      | 69      | 8,2     | 73      | 250          | 4    | 132107 | 85        | 45 Sh |
|              |         |         |         |         |         |         |         |         |         |         |              |      | 132108 | 120       | 60 Sh |
|              |         |         |         |         |         |         |         |         |         |         |              |      | 132109 | 150       | 75 Sh |
| AT 20        | 71      | 55      | 27,5    | 19      | 18,3    | 55,7    | 10      | -       | -       |         | 344          | 1    | 132110 | 100       | 45 Sh |
|              |         |         |         |         |         |         |         |         |         |         |              |      | 132111 | 150       | 60 Sh |
|              |         |         |         |         |         |         |         |         |         |         |              |      | 132112 | 180       | 75 Sh |
| AT 21 round  | 70      | 70      | 38,5    | 20,7    | 18,3    | 55,7    | 10      | 80      | 8,5     | 86      | 437          | 1    | 132113 | 135       | 45 Sh |
|              |         |         |         |         |         |         |         |         |         |         |              |      | 132114 | 190       | 60 Sh |
|              |         |         |         |         |         |         |         |         |         |         |              |      | 132115 | 250       | 75 Sh |
| AT 21 lugs   | 70      | 70      | 38,5    | 20,7    | 18,3    | 55,7    | 10      | 80      | 8,5     | 86      | 437          | 4    | 132116 | 135       | 45 Sh |
|              |         |         |         |         |         |         |         |         |         |         |              |      | 132117 | 190       | 60 Sh |
|              |         |         |         |         |         |         |         |         |         |         |              |      | 132118 | 250       | 75 Sh |
| AT 31 lugs   | 90      | 95      | 47      | 28      | 20,2    | 65      | 16      | 95      | 8,5     | 107     | 780          | 4    | 132136 | 250       | 45 Sh |
|              |         |         |         |         |         |         |         |         |         |         |              |      | 132137 | 350       | 60 Sh |
|              |         |         |         |         |         |         |         |         |         |         |              |      | 132138 | 420       | 75 Sh |
| AT 40 round  | 100     | 90      | 42      | 28      | 22,2    | 74      | 18      | 100     | 8,5     | 112     | 789          | 1    | 132139 | 225       | 45 Sh |
|              |         |         |         |         |         |         |         |         |         |         |              |      | 132140 | 320       | 60 Sh |
|              |         |         |         |         |         |         |         |         |         |         |              |      | 132141 | 380       | 75 Sh |
| AT 40 lugs   | 100     | 90      | 42      | 28      | 22,2    | 74      | 18      | 100     | 8,5     | 112     | 780          | 4    | 132142 | 225       | 45 Sh |
|              |         |         |         |         |         |         |         |         |         |         |              |      | 132143 | 320       | 60 Sh |
|              |         |         |         |         |         |         |         |         |         |         |              |      | 132144 | 380       | 75 Sh |
| AT 41 round  | 100     | 110     | 49      | 28      | 22,2    | 74      | 18      | 100     | 8,5     | 112     | 895          | 1    | 132145 | 250       | 45 Sh |
|              |         |         |         |         |         |         |         |         |         |         |              |      | 132146 | 360       | 60 Sh |
|              |         |         |         |         |         |         |         |         |         |         |              |      | 132147 | 480       | 75 Sh |
| AT 41 lugs   | 100     | 110     | 49      | 28      | 22,2    | 74      | 18      | 100     | 8,5     | 112     | 900          | 4    | 132148 | 250       | 45 Sh |
|              |         |         |         |         |         |         |         |         |         |         |              |      | 132149 | 360       | 60 Sh |
|              |         |         |         |         |         |         |         |         |         |         |              |      | 132161 | 480       | 75 Sh |
| AT 70 réduit | 163,5   | 97      | 36      | 43,5    | 60,2    | 118     | 22      | 145     | 10,5    |         | 3124         | 2    | 132162 | 450       | 45 Sh |
|              |         |         |         |         |         |         |         |         |         |         |              |      | 132163 | 600       | 60 Sh |
|              |         |         |         |         |         |         |         |         |         |         |              |      | 132164 | 800       | 75 Sh |
| AT 70        | 163,5   | 140     | 66      | 46      | 60,2    | 118     | 22      | 145     | 10,5    |         | 3124         | 2    | 132165 | 700       | 45 Sh |
|              |         |         |         |         |         |         |         |         |         |         |              |      | 132166 | 900       | 60 Sh |
|              |         |         |         |         |         |         |         |         |         |         |              |      | 132167 | 1100      | 75 Sh |
| AT 71        | 163,5   | 170     | 96      | 46      | 60,2    | 118     | 22      | 145     | 10,5    |         | 3790         | 2    | 132168 | 850       | 45 Sh |
|              |         |         |         |         |         |         |         |         |         |         |              |      | 132169 | 1100      | 60 Sh |
|              |         |         |         |         |         |         |         |         |         |         |              |      | 132170 | 1400      | 75 Sh |

